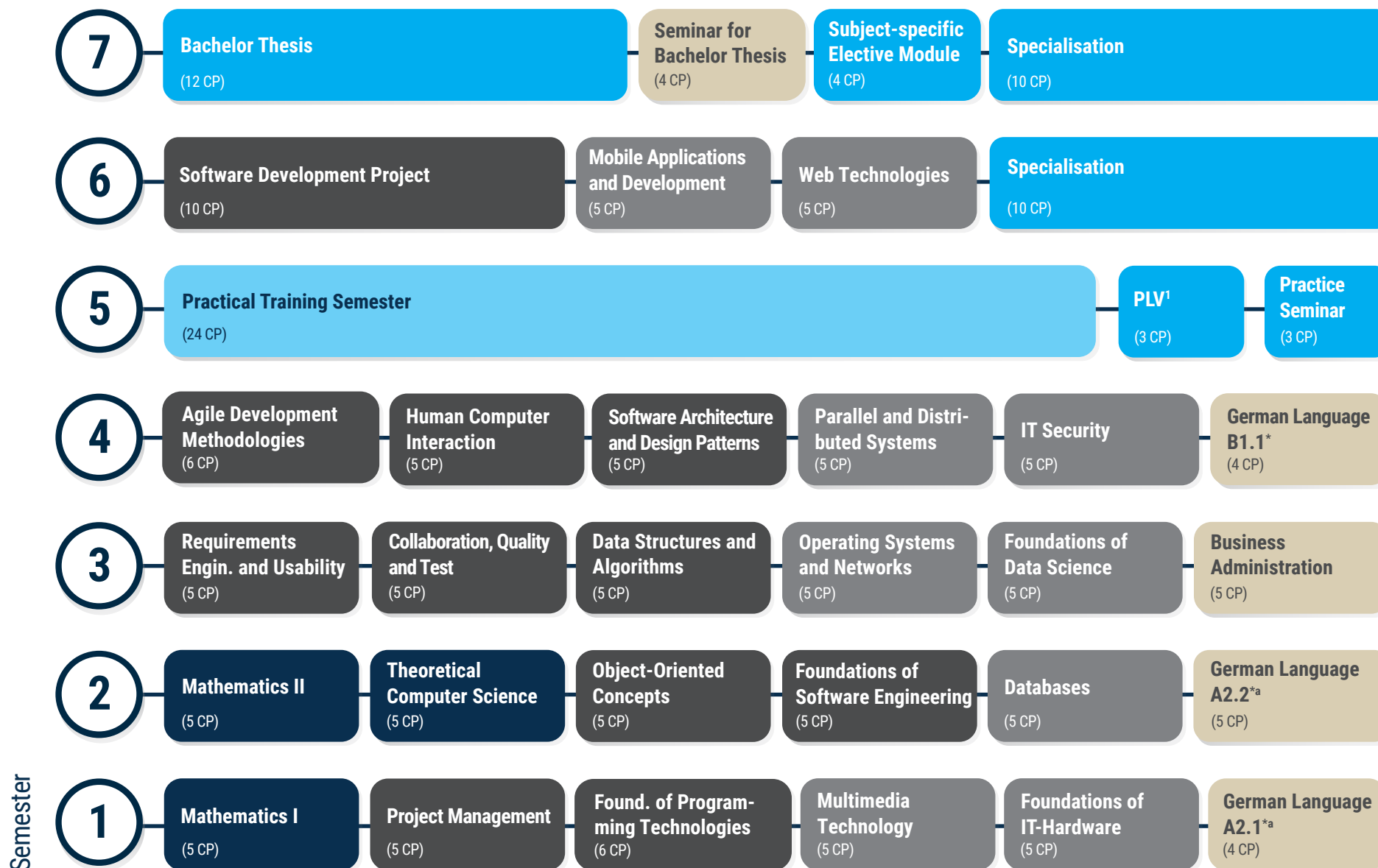


Study Progress Plan Software Design International (Bachelor of Science)



Analytical, Design and Implementation Competences as well as Project Management Competences
 Technological Competences
 Interdisciplinary

Formal, Algorithmic and Mathematical Competences
 Electives
 Practical Training Semester

¹PLV = Accompanying Practice Specialisation (Praxisbegleitende Lehrveranstaltung)

*For alternatives, see Study and Examination Regulations

210 CP ECTS can be obtained in total.