



Deutscher Akademischer Austauschdienst
German Academic Exchange Service



Table of Contents

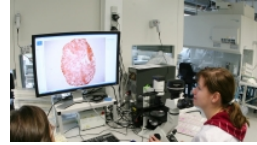
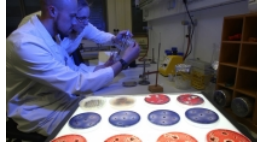
Master's degree	2
Biotechnology • Brandenburg University of Technology Cottbus-Senftenberg • Senftenberg.....	2

Master's degree



Biotechnology

Brandenburg University of Technology Cottbus-Senftenberg • Senftenberg



Overview

Degree	Master of Science
Course location	Senftenberg
Teaching language	<ul style="list-style-type: none">English
Languages	All courses are held in English.
Full-time / part-time	<ul style="list-style-type: none">full-time
Programme duration	3 semesters, 4 semesters
Beginning	Winter and summer semester
Application deadline	Please check https://www.b-tu.de/en/biotechnology-ms/admission for more information and updates.
Tuition fees per semester in EUR	None
Combined Master's degree / PhD programme	No
Joint degree / double degree programme	No
Description/content	<p>The three- or four-semester international Master's programme in Biotechnology is an intensive, laboratory-based, research-oriented training programme that follows a Bachelor's programme in Biotechnology of seven or six semesters. The Master's programme starts every year in the summer semester (for the programme with a regular duration of three semesters) or winter semester (for the programme with a regular duration of four semesters). The programme will be conducted on the campus in Senftenberg.</p> <p>To provide our students with a broad theoretical background and extensive practical training, lectures and lab courses are offered in the following specialisations:</p>

- Cell Biology
- Microbiology
- Bioanalytics
- Laboratory Diagnostics

A maximum of eight study places will be offered in each specialisation. Prospective students have to choose one specialisation after their admission. Places will be allocated according to this decision if there are enough study places available in a specialisation. In case there are more prospective students for a specialisation than places available, places will be allocated according to the highest ranking in the admission procedure.

Our Master's programme is focused on achieving practical competencies, educating autonomous self-confident graduates.

To assure individual training at a high standard, special emphasis is put on individual training in small groups. Therefore, the number of participants is limited. All lectures, seminars, and laboratory courses are taught in English.

After two or three semesters of intensive training, students complete the programme with a five-month thesis project leading to the Master of Science degree.

The thesis project involves experimental work under the supervision of a faculty member of the Master's programme. This work can also be done outside the university, i.e., in research institutes or companies.

For more information, please visit: <https://www.b-tu.de/en/biotechnology-ms>.

Course Details

Course organisation

Cell Biology

- Cells and Tissues – Culture and Evaluation
- Bioengineering of Animal/Human Cells
- Tissue Engineering
- Molecular Dynamics of the Cell
- Genetic Engineering of Eukaryotic Cells
- Molecular Biotechnology and Society

Microbiology

- Eukaryotic Microorganisms/Microalgae
- Methods in Synthetic Microbiology
- Enzyme Technology
- Metabolic Analysis and Engineering
- Synthetic Microbiology
- Microbial Metabolism

Bioanalytics

- Methods in Nanobiotechnology
- Purification and Characterisation of Proteins
- Proteostasis
- Nanobiotechnology
- Methods in Enzyme Technology

Laboratory Diagnostics

- Methods in Laboratory Diagnostics
- Methods in Bioanalytics
- Introduction to Laboratory Diagnostics
- Molecular Biology: Principles, Methods, and Applications
- Point of Care Diagnostic

- Immunology

Compulsory Elective Modules

General Studies

Master's Thesis

[» PDF Download](#)

A Diploma supplement will be issued	Yes
International elements	<ul style="list-style-type: none"> • Projects with partners in Germany and abroad • International comparisons and thematic reference to the international context • Specialist literature in other languages • Opportunities for students to work abroad
Description of other international elements	<ul style="list-style-type: none"> • Master's theses with international partners are supported. • All courses are held in English.
Integrated internships	<ul style="list-style-type: none"> • Research internship (four-semester version only) • An external Master's thesis is possible.
Course-specific, integrated German language courses	No
Course-specific, integrated English language courses	No

Costs / Funding

Tuition fees per semester in EUR	None
Semester contribution	Apart from a few degree programmes, education offered at the BTU Cottbus-Senftenberg is without tuition fees. However, the university does charge a semester fee each semester (currently: winter semester 2024/25: 341.40 EUR). This covers costs for student services organisation, the Student Council as well as the semester ticket.

Costs of living

Studies abroad often have different types of expenses from the ones you know from your home country. You are responsible for covering your own living expenses. Accommodation and other essential living expenses will amount to around 700–950 EUR/month. Of course, this amount depends entirely on individual lifestyle. The following list gives you an idea of some fixed and variable costs that you should take into account for your stay in Germany.

Monthly costs:

- rent (including utilities): 200–450 EUR
- groceries: approx. 170 EUR
- health insurance, medical fees, medication: approx. 120 EUR
- miscellaneous (clothing, study materials, other activities): 200–300 EUR
- total: 700–950 EUR

The so-called "Deutschlandticket" included in the semester ticket allows you to travel using all

local public means of transportation throughout Germany.

Funding opportunities within the university

Yes

Description of the above-mentioned funding opportunities within the university

Studying at BTU is mostly free of (tuition) fees. Because of this, there are only limited scholarship opportunities for international students. The International Relations Office is nonetheless pleased to be able to award a limited number of scholarships to international students already enrolled at BTU. You can find more information on BTU scholarship opportunities on our websites: <https://www.b-tu.de/en/international/international-students/during-studies/scholarships>

Requirements / Registration

Academic admission requirements

- At least a Bachelor's degree in the subject area or an equivalent degree with
 - 210 ECTS credits, equivalent to European seven semester study (for the programme with a regular duration of three semesters) or
 - 180 ECTS credits, equivalent to European six semester study (for the programme with a regular duration of four semesters).
- Relevant Bachelor's programmes are in particular Biotechnology, Biochemistry, Biophysics, Bioengineering, Molecular Biology, and research-oriented Human or Veterinary Medicine (with focus on one of the previously mentioned subjects). Bachelor's degrees in other areas of Human or Veterinary Medicine and in Pharmacy are not accepted.
- Degrees without a thesis or an equivalent publication are not accepted. Applicants have to submit the thesis/equivalent publication during the application process. (If the thesis/equivalent publication is not in English or German, you have to submit the paper(s) in the original language and to add a meaningful summary in English or German.)
- At least 70 ECTS credits or 60 semester hours of biological, biomedical, biochemical or biophysical subjects in the Bachelor's programme.
- A proof of practical laboratory work of at least 18 weeks (e.g., during the preparation of the thesis, practical semester, for details please check this [form](#)).

Language requirements

Certificate of proficiency in English must be provided. Accepted tests and minimum scores are:

- a TOEFL certificate, minimum score of 79 points (iBT)
- an IELTS certificate, minimum 6.0
- a Cambridge Certificate in Advanced English (min. grade B)
- a Cambridge Certificate of Proficiency in English (min. grade C)
- a UNIcert certificate, minimum grade II

Applicants with a higher education entrance qualification from Australia, Canada, Ireland, New Zealand, Great Britain incl. Northern Ireland or the United States of America do not have to submit a separate proof of English language skills. Applicants who completed a secondary level degree in English in Germany or in one of the above mentioned countries are also exempted from presenting a formal English language certificate.

Applicants who have acquired their higher education entrance qualification in Germany or at a German school abroad can also submit a certificate of higher education entrance qualification, which shows English language skills at least at level B2 of the Common European Framework of Reference for Languages (CEFR). This proof is provided, for example, by presenting an A-level certificate with corresponding confirmation from the school or by providing a document issued by the Ministry of Education in the respective federal state confirming that the required level of English (minimum of B2/CEFR) has been achieved.

German language skills are not required for admission to this study programme.

Application deadline

Please check <https://www.b-tu.de/en/biotechnology-ms/admission> for more information and updates.

Submit application to

International applicants must submit their application via the uni-assist online application platform: my.uni-assist.de.

The application has to be submitted entirely online. No hard copies are required.

Services

Possibility of finding part-time employment

There are [job opportunities](#) both in town and on campus. Nevertheless, please do not come to Germany expecting to be able to finance your entire studies by working. The study load is high, and it is not always easy to find a part-time job. Students from non-European countries are allowed to work either 120 whole days or 240 half days annually. The 120-day rule is not affected by mandatory internships or student assistance jobs at university. Students from EU member countries, the European Economic Area (EEA) and Switzerland can work without restrictions during their studies in Germany.

Accommodation

BTU Cottbus-Senftenberg is a university with three locations where numerous [student dormitories](#) are provided. Students can choose between different room types. The room capacities in our dormitories are limited, thus we recommend to apply as early as you receive your admission letter for an apartment in the dormitories.

In Germany, it is also very common for students to live alone or with friends. If three or more people share an apartment together, this is called a "WG" in German ("Wohngemeinschaft", which means a shared flat).

Career advisory service

The BTU Career Center (<https://www.b-tu.de/en/careercenter>) offers extensive support to international students and graduates, ensuring that students experience a smooth transition into the job market. We help students on their journey to a successful career path by offering seminars, workshops and career advisory services to ensure students succeed in their job application processes, and land a great position.

Our offers include:

- BTU Job Portal: online job board for students
- BTU Campus-X-Change and BTU Matching Day: annual job fair and online recruiting event to connect students with employers
- FIT@BTU: a DAAD-funded project that helps students make the transition to a successful career
- Start up your Career in Brandenburg: a project co-financed by the EU and Brandenburg, with the aim of preparing international students for the Brandenburg job market

Support for international students and doctoral candidates

- Welcome event
- Buddy programme
- Support with registration procedures
- Accompanying programme

General services and support for international students and doctoral candidates

The BTU offers a wide range of support during your preparation for your stay in Germany, your first days on campus and throughout your whole study programme.

Among others, the International Relations Office offers the following services:

- [Welcome and Registration Point](#) to support during the start of the semester
- [Onboarding Info Sessions](#) to inform about important topics regarding the preparation for your studies

- [different excursions and events](#) to take part and get to know the area
- and much more...



Study and Research at a High Level in Germany: BTU Cottbus-Senftenberg

At BTU Cottbus-Senftenberg, we are passionately researching the questions of the future. Good teaching conditions are as important to us as conducting outstanding basic research and facilitating effective knowledge transfer into practical applications for industry and medium-sized businesses.

» more:

<https://www.youtube.com/watch?v=cQ7klU54eM4&t=2s>

— Brandenburg University of Technology —
Cottbus-Senftenberg



The BTU welcomes you to start your academic journey!

© BTU

Located on three campuses and with about 60 [study programmes](#), BTU Cottbus-Senftenberg offers a broad spectrum of market-oriented programmes as well as traditional degree programmes.

From the natural sciences and engineering to economics, cultural studies, and even health sciences, BTU offers a wide range of courses. Our 17 study programmes taught exclusively in English are very popular among both German and international students from all over the world.

BTU is partnered with over 220 universities throughout the world, which provides students with a multitude of excellent opportunities to spend part of their time [studying or conducting research abroad](#). Furthermore, in cooperation with our [international partner universities](#), BTU offers a wide range of [double degree and joint degree programmes](#)



University location

Cottbus is located in the north-east of Germany, between the country's capital, Berlin (100 km), and Dresden (120 km). With a population of approx. 100,000 inhabitants, Cottbus is the second largest city after Potsdam in the federal state of Brandenburg. The Polish border is only approx. 30 km away. The location of Cottbus offers a convenient starting point for trips into the picturesque region of Lower Lusatia. The landscape of Lower Lusatia is characterised by the Spreewald with its small canals and waterways as well as by the Slavonic minority called Sorbs or Wends. Their language, similar to Polish, is still used and spoken in Lower Lusatia. For this reason, many of the road signs and informational boards in Cottbus and the surrounding region are written in both Sorbian and German. Cottbus gained importance as a trade centre in the 12th century. Parts of the original city wall from the 14th century as well as the beautiful townhouses around the old market square are proof of the city's early splendour. Additionally, the city is characterised by buildings from the "Wilhelminian" times of rapid industrial growth in Germany, which occurred towards the end of the 19th century. The city that first rose to prominence with its cloth and linen weaving industry soon evolved into a growing centre of brown coal mining. Today, Cottbus is in the midst of a structural transformation. The BTU supports this development with its engagement in the [Lausitz Science Park](#) megaproject, which aims to build an appealing innovation landscape.

Senftenberg is the centre of the Lusatia Lake District. Former excavation and mining pits have been flooded in order to create the largest artificial lake system in Europe, with a total of 23 large lakes. The water sports area "Senftenberger See", with its water surface of 1,300 hectares, offers exceptional sailing and surfing opportunities, and it is suitable for all kinds of water sports. Senftenberg has thus become a tourist attraction within the region.

Contact

Brandenburg University of Technology Cottbus-Senftenberg
Bureau of International Studies (BIS)

René Grube

Platz der Deutschen Einheit 1
03046 Cottbus

Tel. +49 355692879

✉ biotechnology-ms@b-tu.de

🌐 Course website: <https://www.b-tu.de/en/biotechnology-ms>

📘 <https://www.facebook.com/btucs/>

✖ https://twitter.com/BTU_CS

🌐 <https://www.linkedin.com/school/btu-cottbus-senftenberg/>

📺 <https://www.youtube.com/c/btucottbussenftenberg>

Last update 20.01.2025 15:47:27

International Programmes in Germany - Database

www.daad.de/international-programmes

www.daad.de/sommerkurse

Editor

DAAD - Deutscher Akademischer Austauschdienst e.V.

German Academic Exchange Service

Section K23 – Information on Studying in Germany

Kennedyallee 50

D-53175 Bonn

www.daad.de

GATE-Germany

Consortium for International Higher Education Marketing

www.gate-germany.de

Disclaimer

The data used for this database was collected and analysed in good faith and with due diligence. The DAAD and the Content5 AG accept no liability for the correctness of the data contained in the "International Programmes in Germany" and "Language and Short Courses in Germany".

The publication is funded by the German Federal Ministry of Education and Research and by contributions of the participating German institutions of higher education.



Federal Ministry
of Education
and Research