



Deutscher Akademischer Austauschdienst
German Academic Exchange Service



Table of Contents

Master's degree	2
Master of Public Health (MPH) • Hamburg University of Applied Sciences • Hamburg.....	2

Master's degree



Master of Public Health (MPH)

Hamburg University of Applied Sciences • Hamburg

Overview

Degree	Master of Public Health (MPH)
Course location	Hamburg
Teaching language	<ul style="list-style-type: none">English
Languages	Classes are held in English only. For a better integration into life in Germany, we recommend some basic German.
Full-time / part-time	<ul style="list-style-type: none">full-time
Programme duration	3 semesters
Beginning	Winter and summer semester
Additional information on beginning, duration and mode of study	This course is taught in person only. There is not an option to study online.
Application deadline	<p>Application periods:</p> <p>1 June to 30 September (programme start: April) 1 December to 31 March (programme start: October)</p> <p>Please have your school and Bachelor's certificates checked first by uni-assist (www.uni-assist.de) to get a VPD ("Vorprüfungsdocumentation") BEFORE applying to HAW Hamburg.</p> <p>With your VPD, please apply using the HAW Hamburg online application portal.</p> <p>The HAW Hamburg online application portal is open during the application period only.</p> <p>You do not need to send your documents with the postal mail to complete your application.</p>
Tuition fees per semester in EUR	2,400 EUR
Additional information on tuition fees	<p>Tuition fees: 2,400 EUR per semester (total cost for the degree programme: 7,200 EUR).</p> <p>In addition, students must also pay the semester contribution (see below).</p>
Combined Master's degree /	No

PhD programme

Joint degree / double degree programme No

Description/content

The Master of Public Health aims to equip participants with scientific and practical skills to independently conduct research that brings about policy changes and that positively affects a population's health. Its key concept is to preserve and enhance the health, well-being and life expectancy of human populations by integrating scientific knowledge, practical skills and data research analysis to advance public health.

The course comprises 10 modules which focus on the determinants of health and major health problems from a global and interdisciplinary perspective. Students will acquire knowledge in conceptualisation, planning, implementation and evaluation of public health interventions, study designs, and research methods. Students are able to gain a comprehensive understanding in ethics and in current developments of public health. The programme culminates in writing the Master's thesis. The aim is to formulate and analyse a problem, using a suitable study design and study methods; concepts and methods learned during the programme will be applied.

This course is taught in person only. There isn't an option to study online.

Course Details

Course organisation

The number of students is limited to a maximum of 24; therefore, seminars and small group work are possible in all modules.

The Master of Public Health degree is three semesters in length. The programme is divided into two parts. The first part comprises two semesters with a total of 60 credit points (CP), focusing on the determinants of health and major health problems in a global and interdisciplinary perspective. In the second part (third semester), a Master's thesis must be completed within six months. The thesis is worth 30 credit points (CP).

First Semester: Five modules are required (6 CPs each).

- Public Health Principles
- Statistical Methods
- Epidemiology
- Qualitative Research Methods and Ethics
- Evidence Based Public Health

Second Semester: Five modules are required (6 CPs each).

- Environmental and Occupational Health
- Health Promotion and Prevention
- Leadership and Programme Planning
- Health Policy and Management
- Health Economics

Third Semester (30 CPs):

- Master's thesis

This course is taught in person only. There isn't an option to study online.

For more detailed information about the modules and course content, please click on the PDF link below.

[» PDF Download](#)

A Diploma supplement will

Yes

be issued

International elements

- International comparisons and thematic reference to the international context
- International guest lecturers

Integrated internships

Students can complete their Master's theses in cooperation with public health-related organisations.

Course-specific, integrated German language courses

No

Course-specific, integrated English language courses

No

Costs / Funding

Tuition fees per semester in EUR

2,400 EUR

Additional information on tuition fees

Tuition fees: 2,400 EUR per semester (total cost for the degree programme: 7,200 EUR).
In addition, students must also pay the semester contribution (see below).

Semester contribution

Each semester, students have to pay a semester contribution (345 EUR as of September 2024). This fee includes a semester ticket for unlimited use of Hamburg's public transport system. For more information about studying and living in Hamburg, see: <https://www.haw-hamburg.de/en/international/international-students/>.

Costs of living

Hamburg is a relatively expensive city. Depending on your lifestyle, you should expect living costs of 700 to 900 EUR for rent, food, and other expenses.

Funding opportunities within the university

No

Requirements / Registration

Academic admission requirements

- First degree either in health sciences / public health or a similar degree relevant to health sciences, such as medicine, social sciences, nursing or a degree in a health care profession or a degree in a discipline that is closely related to health sciences such as, for example, economics and a minimum of 210 ECTS
- Proof of one year of professional experience in public health or qualified scientific work with convincing substantial and methodological relevance to health sciences / public health (attestation of employer)
- Language certificate if English is not your first language (see language requirements)

Uni-assist (VPD) (www.uni-assist.de): Students who completed their school education outside Germany must have their high school and Bachelor certificates checked by uni-assist and receive a VPD BEFORE applying to the HAW Hamburg. The VPD from uni-assist must be uploaded as part of the application process at HAW Hamburg. Please be advised that the uni-assist VPD process can

take six to eight weeks, so please apply early.

For more information about academic requirements: <https://bit.ly/3kP35Bz>

Language requirements	Non native-speakers: internationally recognised certificate of English language knowledge (CEFR Level C1), such as TOEFL iBT min. 110 points, IELTS (min. 6.5), CAE (min. C), etc.
Application deadline	<p>Application periods:</p> <p>1 June to 30 September (programme start: April) 1 December to 31 March (programme start: October)</p> <p>Please have your school and Bachelor's certificates checked first by uni-assist (www.uni-assist.de) to get a VPD ("Vorprüfungsdokumentation") BEFORE applying to HAW Hamburg.</p> <p>With your VPD, please apply using the HAW Hamburg online application portal</p> <p>The HAW Hamburg online application portal is open during the application period only.</p> <p>You do not need to send your documents with the postal mail to complete your application.</p>
Submit application to	<p>Please apply using the HAW Hamburg online portal</p> <p>You do not need to send your documents with the postal mail to complete your application.</p> <p>Contact: MPH_info@haw-hamburg.de</p>

Services

Possibility of finding part-time employment	<p>If you are coming to Germany on a visa, you will have to provide proof of your finances for the first year: 853 EUR/month – 10,236 EUR/year.</p> <p>EU students can work 20 hours/week. Students from non-EU countries are only permitted to work 120 full days (240 half days) in one calendar year, and part-time job opportunities are limited, especially for students who do not speak German. It is unlikely that we will be able to offer you a job on campus.</p> <p>More information can be found here, under "Visa & Paperwork": https://www.haw-hamburg.de/en/international/international-students/</p>
Accommodation	<p>"Studierendenwerk Hamburg" offers affordable accommodation for students under the age of 30. Generally, students have their own room in a shared apartment with a communal bathroom and kitchen. The monthly rent for a room in a student hall of residence is usually between 350 and 450 EUR (including amenities). New students can apply three months before the start of their degree programme.</p> <p>Please be advised that it is unfortunately not easy to find accommodation in Hamburg; finding somewhere to live can take a while. The student halls of residences offered by the "Studierendenwerk Hamburg" often have waiting lists.</p> <p>Further information on accommodation can be found here: https://www.haw-hamburg.de/en/study/campus-life/accommodation/.</p>

Career advisory services and

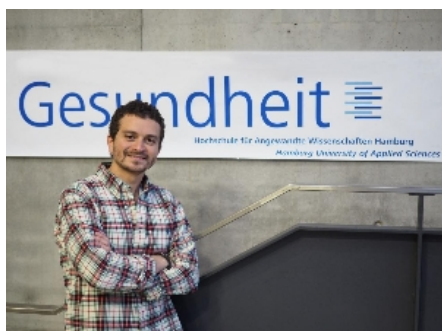
The HAW Hamburg has a Career Service Office that offers advice on working in Germany, finding

programmes for future professionals

internships and successfully applying for jobs in Germany.

Support for international students and doctoral candidates

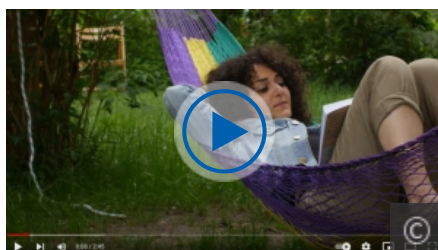
- Welcome event
- Buddy programme
- Tutors



©I. Weatherall

Omar Aboelyzeid
Master of Public Health (MPH)

My Master's thesis is about the benefits and challenges of projects for refugees. It has allowed me to get in contact with different people and cultures on many levels, and it has developed my character even more. After graduation, I would like to join an international organisation that helps people in crisis. I wouldn't have done all of this if I hadn't come to the HAW Hamburg and profited from the positive atmosphere and support that I always get from my professors here.



MPH Alumnus - Rachel Babaganov

Video portrait about international MPH alumna, Rachel Babaganov from Canada. She talks about her study and research experience as part of the MPH programme and her next steps after graduating.

» more:

<https://www.youtube.com/watch?v=VJ7PmmLFg5k>

— Hamburg University of Applied Sciences —



HAW Hamburg – Bergedorf campus – Life Sciences

© HAW Hamburg / Paula Markert

Hamburg University of Applied Sciences (HAW Hamburg) is one of the largest of its kind in Germany and within our four faculties we offer a wide range of Bachelor's and Master's programmes in engineering, IT, life sciences, design and media as well as business and social sciences. We focus on applied sciences in our teaching, giving our students a practical insight into their fields of study through projects, lab work, internships and theses in industry. Our expertise is drawn from faculty members who have worked in industry before joining the university. In research, we are an important partner for the city of Hamburg's companies and innovation clusters, developing new ideas from the synergies of this dynamic location.

Our fields of expertise reflect the technologies, industries and services that make Germany a leading economy, and our close collaboration with Hamburg's innovation clusters allows us to develop this knowledge in our teaching and research.

We are a very international university, with students from over 100 countries making up 16% of our students. Combined with the international nature of the city of Hamburg, you will feel very comfortable studying here.

Read more about the city and what our students say: <https://bit.ly/3bq2r13>



University location

In the north of Germany and in the heart of Europe, Germany's second largest city (1.8 million) offers excellent quality of life and international flair. If you like to spend your leisure time outdoors, then you will love Europe's "greenest" city with its lake, canals and beautiful parks. For those of you who love culture, Hamburg's museums, theatres and its world-famous concert hall, the Elbphilharmonie, will inspire you. Hamburg is also one of the most dynamic commercial centres in Europe, placing its strategic focus on six innovative segments: aviation (Airbus), IT and media, the international port and logistics, life sciences (biotechnology, medical technology and health care), nanotechnology, and renewable energies. We are sure you will feel at home.

Contact

Hamburg University of Applied Sciences

Faculty of Life Sciences
Department of Health Sciences

Ulmenliet 20
21033 Hamburg

✉ MPH_info@haw-hamburg.de

🌐 Course website: <https://www.haw-hamburg.de/en/study/degree-courses-a-z/study-courses-in-detail/course/courses/show/public-health/Studieninteressierte/>

📘 <https://www.facebook.com/HAWHamburgStudyAbroad>

📷 <https://www.instagram.com/hawinternational/>

Last update 23.04.2025 01:16:41

International Programmes in Germany - Database

www.daad.de/international-programmes
www.daad.de/sommerkurse

Editor

DAAD - Deutscher Akademischer Austauschdienst e.V.
German Academic Exchange Service
Section K23 – Information on Studying in Germany
Kennedyallee 50
D-53175 Bonn
www.daad.de

GATE-Germany

Consortium for International Higher Education Marketing
www.gate-germany.de

Disclaimer

The data used for this database was collected and analysed in good faith and with due diligence. The DAAD and the Content5 AG accept no liability for the correctness of the data contained in the "International Programmes in Germany" and "Language and Short Courses in Germany".

The publication is funded by the German Federal Ministry of Education and Research and by contributions of the participating German institutions of higher education.



Federal Ministry
of Education
and Research