



Deutscher Akademischer Austauschdienst  
German Academic Exchange Service



## Table of Contents

<b>Master's degree</b> .....	<b>2</b>
<b>Urban Design and Sustainable Revitalisation • Brandenburg University of Technology Cottbus-Senftenberg • Cottbus</b> .....	<b>2</b>

# Master's degree



## Urban Design and Sustainable Revitalisation

Brandenburg University of Technology Cottbus-Senftenberg • Cottbus



## Overview

<b>Degree</b>	Master of Science
<b>In cooperation with</b>	Cairo University and Alexandria University, Egypt
<b>Teaching language</b>	<ul style="list-style-type: none"><li>English</li></ul>
<b>Languages</b>	The course is held entirely in English language.
<b>Full-time / part-time</b>	<ul style="list-style-type: none"><li>full-time</li></ul>
<b>Programme duration</b>	4 semesters
<b>Beginning</b>	Winter semester
<b>Application deadline</b>	15 July for the following winter semester
<b>Tuition fees per semester in EUR</b>	Yes
<b>Additional information on tuition fees</b>	<p>The standard four-semester degree programme is tuition free.</p> <p>Within the double degree along with local semester fees, additional 3,000 EUR will be charged for the second and third semester as well as 750 EUR for the fourth semester.</p>
<b>Combined Master's degree / PhD programme</b>	No
<b>Joint degree / double degree programme</b>	Yes
<b>Description/content</b>	The Master's programme in Urban Design and Sustainable Revitalisation cordially welcomes motivated individuals from across the globe and Germany. Prospective applicants are expected to hold a Bachelor degree in architecture, urban and regional planning, urban design, landscape

architecture, or related disciplines.

This programme offers a diverse curriculum designed to equip students with essential urban design skills, with a specific focus on revitalising existing neighbourhoods and urban landscapes of cultural significance. Graduates will acquire the expertise necessary to address the multifaceted challenges of contemporary urban environments, fostering innovative solutions for sustainable, inclusive, and culturally rich communities.

At the core of the curriculum lies an interdisciplinary approach to learning and practical engagement. Through design-based projects and comprehensive coursework, students explore the intricate relationship between architecture, urban design, urban development, and cultural heritage preservation. This approach empowers students to envision and implement holistic solutions that shape the built environment across various scales.

The programme offers two study options:

- [A standard four-semester degree programme](#), fully offered at BTU, with an option to study one semester abroad
- [A double degree programme](#) in cooperation with Cairo and Alexandria universities in Egypt

---

## Course Details

---

### Course organisation

#### Standard four-semester programme

The Master's programme revolves around Urban Design, where analytical thinking and critical analysis are the key aspects. Each semester, students take on a design project and choose from several elective modules. The programme delves deep into urban design concepts.

- First Semester

Focuses on Urban Design and Rehabilitation

Students work on a design project and take a module on Fundamentals of Urban Design and Development. Various elective modules are also available.

- Second and Third Semester

Cover a broad range of urban design, planning, landscape architecture, and architecture topics. Students can choose one mandatory project and other elective courses.

- Fourth Semester

The fourth academic semester is dedicated to working on the Master's thesis, which is supervised by two professors.

#### Double Degree programme

The double degree option includes two mandatory semesters in Egypt. Participants begin by studying the first semester at BTU Cottbus-Senftenberg, followed by the second semester at Cairo University and the third semester at Alexandria University. During the fourth semester, dedicated to the Master's thesis, students have the flexibility to select their university based on their chosen topic and preferred supervisors.

- First Semester – BTU Cottbus-Senftenberg

Focuses on Urban Design and Rehabilitation

Students work on a design project and take a module on Fundamentals of Urban Design and Development. Various elective modules are also available.

- Second Semester – Cairo University

Focuses on Urban Development

Students can choose from elective modules covering up topics such as Urban Regeneration and Mobility Planning.

- Third Semester – Alexandria University

Emphasises on Architecture in Historic Context

Students will have the chance to learn about adaptive re-use of old buildings and new technologies for sustainable building rehabilitation.

- Fourth Semester – BTU | Cairo University | Alexandria University

The fourth academic semester is dedicated to working on the Master's thesis, which is supervised by professors from two of the three partner universities.

Upon successfully completing the programme, participants are granted a double degree Master of Science from two partner universities. The determination of which universities award the degrees is based on the affiliations of the two supervisors chosen by the students for the Master's thesis.

[» PDF Download](#)

<b>A Diploma supplement will be issued</b>	Yes
<b>International elements</b>	<ul style="list-style-type: none"><li>• International guest lecturers</li><li>• Projects with partners in Germany and abroad</li><li>• International comparisons and thematic reference to the international context</li><li>• Courses are led with foreign partners</li><li>• Content-related regional focus</li></ul>
<b>Integrated internships</b>	While internships are not a mandatory part of the curriculum, they are encouraged. The summer break between the second and third semester is the longest in the programme and lends itself to doing an internship. Programme advisers and professors can assist students in finding an appropriate internship.
<b>Course-specific, integrated German language courses</b>	No
<b>Course-specific, integrated English language courses</b>	No

## Costs / Funding

<b>Tuition fees per semester in EUR</b>	Yes
<b>Additional information on tuition fees</b>	<p>The standard four-semester degree programme is tuition free.</p> <p>Within the double degree along with local semester fees, additional 3,000 EUR will be charged for the second and third semester as well as 750 EUR for the fourth semester.</p>
<b>Semester contribution</b>	Apart from a few degree programmes, education offered at the BTU Cottbus-Senftenberg is without tuition fees. However, the university does charge a <a href="#">semester fee</a> each semester (currently: winter semester 2024/25: 341.40 EUR). This covers costs for student services organisation, the Student Council as well as the semester ticket.

### Costs of living

Studies abroad often have different types of expenses from the ones you know from your home country. You are responsible for covering your own living expenses. Accommodation and other essential living expenses will amount to around 700–950 EUR/month. Of course, this amount depends entirely on individual lifestyle. The following list gives you an idea of some fixed and variable costs that you should take into account for your stay in Germany.

Monthly costs:

rent (including utilities): 200–450 EUR

groceries: approx. 170 EUR

health insurance, medical fees, medication: approx. 120 EUR

miscellaneous (clothing, study materials, other activities): 200–300 EUR

total: 700–950 EUR

The so-called "Deutschlandticket" included in the semester ticket allows you to travel using all local public means of transportation throughout Germany.

### Funding opportunities within the university

Yes

### Description of the above-mentioned funding opportunities within the university

Studying at BTU is mostly free of (tuition) fees. Because of this, there are only limited scholarship opportunities for international students. The International Relations Office is nonetheless pleased to be able to award a limited number of scholarships to international students already enrolled at BTU. You can find more information on BTU scholarship opportunities on our websites:

<https://www.b-tu.de/en/international/international-students/during-studies/scholarships>

## Requirements / Registration

### Academic admission requirements

- A first qualifying academic degree (at least a Bachelor's degree) in architecture, urban design, urban planning, regional planning, landscape planning, or landscape architecture;
- Experience in the recognition of relevant urban development problems, defining tasks, methods, and strategies for solving these problems as well as the ability to develop qualified concepts and to present them. (This criterion is evaluated on the basis of a project portfolio that is to be submitted with the application.)

### Language requirements

A certificate of proficiency in English must be provided. Accepted tests and minimum scores are:

- TOEFL (iBT at least 79 points)
- IELTS (at least 6.0 points)
- Cambridge Certificate in Advanced English (CAE) (minimum grade of B)
- Certificate of Proficiency in English (CPE) (minimum grade of C)
- UNICert, at least II

Applicants with a higher education entrance qualification from Australia, Canada, Ireland, New Zealand, Great Britain (including Northern Ireland) or the United States of America do not have to submit a separate proof of English language skills. Applicants who completed a secondary level degree in English in Germany or in one of the above mentioned countries are also exempted from presenting a formal English language certificate.

German language skills are not required for admission to this study programme.

### Application deadline

15 July for the following winter semester

### Submit application to

International applicants must submit their application via the uni-assist e.V. online application platform "My assist": [www.uni-assist.de/en/](http://www.uni-assist.de/en/). The application is submitted entirely online, no hard copies required.

Detailed information on application requirements, process, and documents is available here: <https://www.b-tu.de/en/urban-design-ms/application>.

## Services

### Possibility of finding part-time employment

There are [job opportunities](#) both in town and on campus. Nevertheless, please do not come to Germany expecting to be able to finance your entire studies by working. The study load is high, and it is not always easy to find a part-time job. Students from non-European countries are allowed to work either 120 whole days or 240 half days annually. The 120-day rule is not affected by mandatory internships or student assistance jobs at university. Students from EU member countries, the European Economic Area (EEA) and Switzerland can work without restrictions during their studies in Germany.

### Accommodation

BTU Cottbus-Senftenberg is a university with three locations where numerous [student dormitories](#) are provided. Students can choose between different room types. The room capacities in our dormitories are limited, thus we recommend to apply as early as you receive your admission letter for an apartment in the dormitories.

In Germany, it is also very common for students to live alone or with friends. If three or more people share an apartment together, this is called a "WG" in German ("Wohngemeinschaft", which means a shared flat).

### Career advisory service

The BTU Career Center (<https://www.b-tu.de/en/careercenter>) offers extensive support to international students and graduates, ensuring that students experience a smooth transition into the job market. We help students on their journey to a successful career path by offering seminars, workshops and career advisory services to ensure students succeed in their job application processes, and land a great position.

Our offers include:

- BTU Job Portal: online job board for students
- BTU Campus-X-Change and BTU Matching Day: annual job fair and online recruiting event to connect students with employers
- FIT@BTU: a DAAD-funded project that helps students make the transition to a successful career
- Start up your Career in Brandenburg: a project co-financed by the EU and Brandenburg, with the aim of preparing international students for the Brandenburg job market

### Support for international students and doctoral candidates

- Welcome event
- Buddy programme
- Support with registration procedures
- Accompanying programme

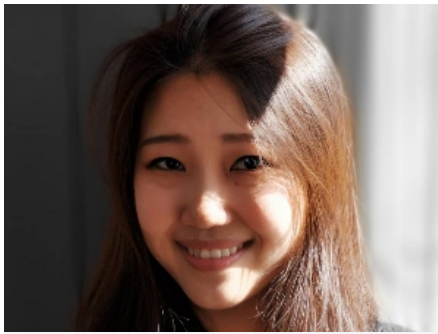
### General services and support for international students and doctoral candidates

The BTU offers a wide range of support during your preparation for your stay in Germany, your first days on campus and throughout your whole study programme.

Among others, the International Relations Office offers the following services:

- [Welcome and Registration Point](#) to support during the start of the semester
- [Onboarding Info Sessions](#) to inform about important topics regarding the preparation for your studies
- [different excursions and events](#) to take part and get to know the area
- and much more...





©Ian Ding

Ian Ding  
MSc

The Master's programme has benefited me by helping me to see the world's diversity. The students all come from very different backgrounds and experiences. The most amazing feeling is that after some time of studying, we all speak the same language of urban design. I am so happy and grateful to stay until graduation and see the world with my own eyes, getting to know so many brilliant teachers, friends from every corner of the world, and of course, opportunities to participate in various events.

## Our Partners

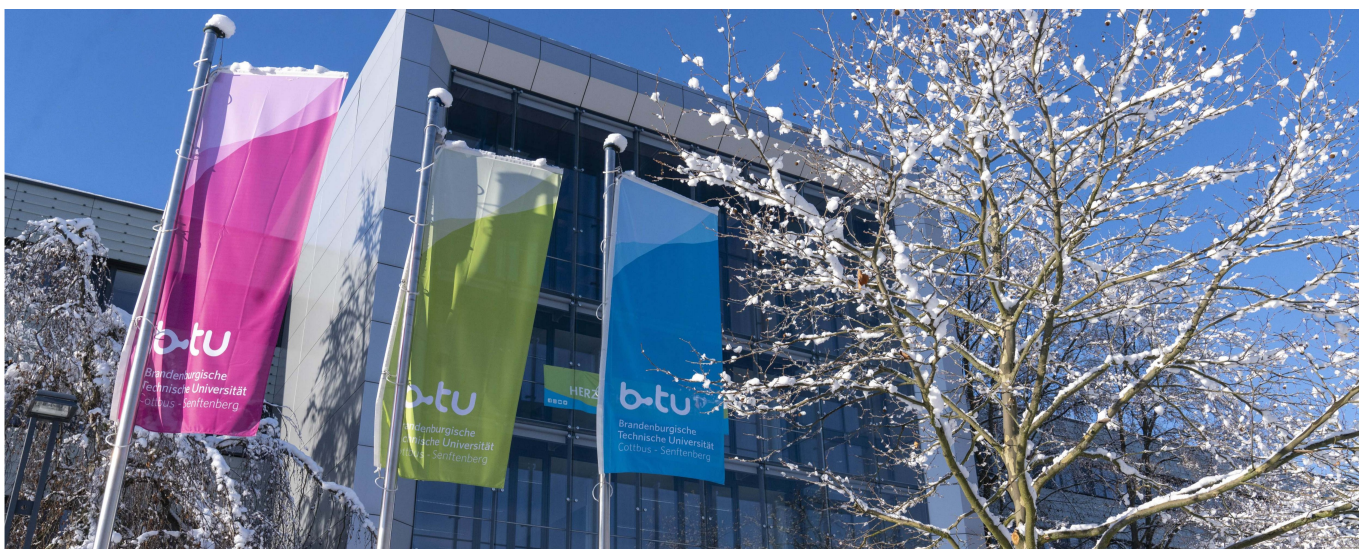


## Study and Research at a High Level in Germany: BTU Cottbus-Senftenberg

At BTU Cottbus-Senftenberg, we are passionately researching the questions of the future. Good teaching conditions are as important to us as conducting outstanding basic research and facilitating effective knowledge transfer into practical applications for industry and medium-sized businesses.

» more:  
<https://www.youtube.com/watch?v=cQ7klU54eM4&t=2s>

# Brandenburg University of Technology Cottbus-Senftenberg



The BTU welcomes you to start your academic journey!

© BTU

Located on three campuses and with about 60 [study programmes](#), BTU Cottbus-Senftenberg offers a broad spectrum of market-oriented programmes as well as traditional degree programmes.

From the natural sciences and engineering to economics, cultural studies, and even health sciences, BTU offers a wide range of courses. Our 17 study programmes taught exclusively in English are very popular among both German and international students from all over the world.

BTU is partnered with over 220 universities throughout the world, which provides students with a multitude of excellent opportunities to spend part of their time [studying or conducting research abroad](#). Furthermore, in cooperation with our [international partner universities](#), BTU offers a wide range of [double degree and joint degree programmes](#)



## University location

Cottbus is located in the north-east of Germany, between the country's capital, Berlin (100 km), and Dresden (120 km). With a population of approx. 100,000 inhabitants, Cottbus is the second largest city after Potsdam in the federal state of Brandenburg. The Polish border is only approx. 30 km away. The location of Cottbus offers a convenient starting point for trips into the picturesque region of Lower Lusatia. The landscape of Lower Lusatia is characterised by the Spreewald with its small canals and waterways as well as by the Slavonic minority called Sorbs or Wends. Their language, similar to Polish, is still used and spoken in Lower Lusatia. For this reason, many of the road signs and informational boards in Cottbus and the surrounding region are written in both Sorbian and German. Cottbus gained importance as a trade centre in the 12th century. Parts of the original city wall from the 14th century as well as the beautiful townhouses around the old market square are proof of the city's early splendour. Additionally, the city is characterised by buildings from the "Wilhelminian" times of rapid industrial growth in Germany, which occurred towards the end of the 19th century. The city that first rose to prominence with its cloth and linen weaving industry soon evolved into a growing centre of brown coal mining. Today, Cottbus is in the midst of a structural transformation. The BTU supports this development with its engagement in the [Lausitz Science Park](#) megaproject, which aims to build an appealing innovation landscape.

Senftenberg is the centre of the Lusatia Lake District. Former excavation and mining pits have been flooded in order to create the largest artificial lake system in Europe, with a total of 23 large lakes. The water sports area "Senftenberger See", with its water surface of 1,300 hectares, offers exceptional sailing and surfing opportunities, and it is suitable for all kinds of water sports. Senftenberg has thus become a tourist attraction within the region.

## Contact

**Brandenburg University of Technology Cottbus-Senftenberg**  
Bureau of International Studies

Narine George

Platz der Deutschen Einheit 1  
03046 Cottbus

Tel. +49 355693240

✉ [urban-design-ms@b-tu.de](mailto:urban-design-ms@b-tu.de)

🌐 Course website: <https://www.b-tu.de/en/urbandesign-ms>

📘 <https://www.facebook.com/btucs/>

🐦 [https://twitter.com/BTU\\_CS](https://twitter.com/BTU_CS)

🌐 <https://www.linkedin.com/school/btu-cottbus-senftenberg/>

📺 <https://www.youtube.com/c/btucottbussenftenberg>

Last update 06.01.2025 18:13:55



# International Programmes in Germany - Database

[www.daad.de/international-programmes](http://www.daad.de/international-programmes)  
[www.daad.de/sommerkurse](http://www.daad.de/sommerkurse)

## Editor

DAAD - Deutscher Akademischer Austauschdienst e.V.  
German Academic Exchange Service  
Section K23 – Information on Studying in Germany  
Kennedyallee 50  
D-53175 Bonn  
[www.daad.de](http://www.daad.de)

## GATE-Germany

Consortium for International Higher Education Marketing  
[www.gate-germany.de](http://www.gate-germany.de)

## Disclaimer

The data used for this database was collected and analysed in good faith and with due diligence. The DAAD and the Content5 AG accept no liability for the correctness of the data contained in the "International Programmes in Germany" and "Language and Short Courses in Germany".

The publication is funded by the German Federal Ministry of Education and Research and by contributions of the participating German institutions of higher education.



Federal Ministry  
of Education  
and Research