



Deutscher Akademischer Austauschdienst
German Academic Exchange Service



Table of Contents

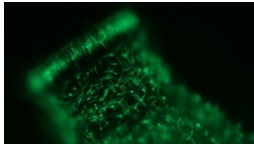
Master's degree	2
Master of Science in Geobiology and Palaeobiology • Ludwig-Maximilians-Universität München • München	2

Master's degree



Master of Science in Geobiology and Palaeobiology

Ludwig-Maximilians-Universität München • München



Overview

Degree	Master of Science
Teaching language	<ul style="list-style-type: none">English
Languages	Courses are held in English (100%).
Full-time / part-time	<ul style="list-style-type: none">full-time
Programme duration	4 semesters
Beginning	Winter semester
Application deadline	Current application deadlines for the following winter semester: Non-EU applicants: 31 March EU applicants: 31 May
Tuition fees per semester in EUR	None
Combined Master's degree / PhD programme	No
Joint degree / double degree programme	No
Description/content	<p>The Master's programme "Geobiology and Palaeobiology" (MGAP) is a consecutive, research-oriented, four-semester, international Master's programme of the Faculty of Geosciences, Ludwig-Maximilians-Universität München (LMU), in collaboration with researchers at the Bavarian State collections, under the umbrella of the GeoBio-Center LMU.</p> <p>MGAP aims to provide students with a comprehensive introduction to the interdisciplinary research fields of Geobiology and Palaeobiology and facilitates early independent research to prepare them for careers in science and beyond. Our graduates frequently secure prestigious PhD-positions or continue in highly respected positions outside of academia.</p>

Course Details

Course organisation

The module-based curriculum provides an integrative approach facilitated by experts with different areas of expertise. The degree programme consists of a set of mandatory modules and elective modules. Students will learn and acquire skills in a wide range of scientific methods, such as modern techniques in molecular biology, including genomics and transcriptomics, geomicrobiology, fieldwork, collection management, bioinformatics, statistics, and (palaeo-)biodiversity assessments. The programme includes independent scientific work in individual and intensively supervised research projects at early stages of the curriculum, with topics ranging from organismic palaeobiology to genomics, phylogenomics, molecular systematics, biomineralisation, as well as geomicrobiology of the deep biosphere.

The programme consists of 120 credits, 30 of which are assigned for the Master's thesis and its defence.

[» PDF Download](#)

Course-specific, integrated German language courses

No

Course-specific, integrated English language courses

No

Costs / Funding

Tuition fees per semester in EUR

None

Semester contribution

124 EUR per semester

Costs of living

Living costs (including accommodation and health insurance) in Munich range from 900 to 1,000 EUR per month.

Funding opportunities within the university

No

Requirements / Registration

Academic admission requirements

Applicants to the programme must possess the equivalent of a Bachelor's degree (in a programme of at least six semesters' duration) with a sufficient grade in one of the following fields:

- Geology
- Biology
- Physical geography

or a related subject

Language requirements

All courses are held in English. Proof of English language proficiency of level C1 according to the Common European Framework of Reference for Languages (CEFR) is required, for example by the following language certificates:

- TOEFL (iBT) (Test of English as a Foreign Language, internet-based): at least 95 points;
- IELTS (International English Language Testing Service): minimum 7.0 points, and no part less than 5.0 points;
- Cambridge CAE (Certificate in Advanced English): Mark "A" or "B";
- A university degree in Geology, Biology or Physical Geography or related subject from a study programme held in English language.

Basic German language proficiency (A1) needs to be proven at latest one year after starting in the programme.

Application deadline

Current application deadlines for the following winter semester:

Non-EU applicants: 31 March

EU applicants: 31 May

Submit application to

Information on the application procedure is available here:

<http://www.mgap.geo.uni-muenchen.de/admission/index.html>

Services

Accommodation

The International Office helps visiting academics, PhD students, and postdocs who are travelling to Munich for a set period of time to find accommodation.

For further information, please visit the following link:

<https://www.lmu.de/en/study/important-contacts/international-office/index.html>

Rooms in shared flats are popular on the private market and reasonably priced at 400-600 EUR per month if located in central parts of Munich.

– Ludwig-Maximilians-Universität München –

Please visit: http://www.en.uni-muenchen.de/about_lmu/index.html



University location

Ludwig-Maximilians-Universität München (LMU Munich) is recognised as one of the top-ranked universities in Europe. Research and teaching at the university's 18 faculties are committed to the highest international standards of excellence. Students can choose from over 200 degree programmes ranging from the humanities and social sciences to economics and law as well as medicine and natural sciences. A growing number of Master's and doctoral programmes are taught in English.

Ludwig-Maximilians-Universität München forms part of a unique network of research institutions, foundations, and corporations in and around the city. Its campuses and a lively international student community constitute an integral part of the urban landscape. Home to approximately 1.5 million people, Munich is not only an important hub for higher education, research, technology, and the media. With its renowned museums, galleries, theatres, and festivals, the capital of Bavaria also ranks among the major European cultural centres. Its proximity to the surrounding lakes and the Bavarian Alps adds to Munich's inimitable appeal.

Contact

Ludwig-Maximilians-Universität München

Department of Earth and Environmental Sciences, Palaeontology & Geobiology & GeoBio-Center

Richard-Wagner-Str. 10
80333 München

✉ mgap@geo.lmu.de

🌐 Course website: <https://www.mgap.geo.uni-muenchen.de/index.html>

Last update 24.05.2024 19:09:58

International Programmes in Germany - Database

www.daad.de/international-programmes
www.daad.de/sommerkurse

Editor

DAAD - Deutscher Akademischer Austauschdienst e.V.
German Academic Exchange Service
Section K23 – Information on Studying in Germany
Kennedyallee 50
D-53175 Bonn
www.daad.de

GATE-Germany

Consortium for International Higher Education Marketing
www.gate-germany.de

Disclaimer

The data used for this database was collected and analysed in good faith and with due diligence. The DAAD and the Content5 AG accept no liability for the correctness of the data contained in the "International Programmes in Germany" and "Language and Short Courses in Germany".

The publication is funded by the German Federal Ministry of Education and Research and by contributions of the participating German institutions of higher education.



Federal Ministry
of Education
and Research