



Deutscher Akademischer Austauschdienst  
German Academic Exchange Service



## Table of Contents

<b>Master's degree .....</b>	<b>2</b>
<b>Applied Geosciences – EMR (MSc) • RWTH Aachen University • Aachen.....</b>	<b>2</b>

# Master's degree



## Applied Geosciences – EMR (MSc)

RWTH Aachen University • Aachen

### Overview

Degree	Master of Science (MSc)
Teaching language	<ul style="list-style-type: none"><li>English</li></ul>
Languages	<p>The courses and the Master's thesis of the streams EMR and AMC are offered in English. The languages of instruction in GIN are German and English.</p> <p>Although German is not necessary, we strongly advise students to obtain basic knowledge of the language for everyday use. Therefore, we offer German language courses at the RWTH Language Center. At the moment, those courses are fully funded for international students of the Department of Earth Science and Geography.</p>
Full-time / part-time	<ul style="list-style-type: none"><li>full-time</li></ul>
Programme duration	4 semesters
Beginning	Winter and summer semester
Application deadline	<p>Non-EU applicants: 1 March for the following winter semester (starting in October) or 1 September for the following summer semester (starting in April)</p> <p>EU applicants: 15 July for the following winter semester (starting in October) or 15 January for the following summer semester (starting in April)</p>
Tuition fees per semester in EUR	None
Combined Master's degree / PhD programme	No
Joint degree / double degree programme	No
Description/content	<p>Our MSc programme Applied Geosciences offers three streams with different language requirements (levels according to the Common European Framework of Reference for Languages):</p> <ul style="list-style-type: none"><li>Energy &amp; Mineral Resources (EMR) in English (B2)</li><li>Applied Mineralogy and Crystallography (AMC) in English (B2)</li><li>Geoengineering (GIN) in German (C1) and English (B2)</li></ul> <p><b>Energy &amp; Mineral Resources (EMR)</b></p>

Of those, our Master's course in Applied Geosciences - Energy & Mineral Resources (EMR) provides hands-on training related to exploration and production of energy and mineral resources as well as sequestration and storage. The language of instruction is English.

Students can choose from a variety of modules, such as Reservoir Geology and Modelling, Geological Planning and Development, Advanced Methods in Economic Geology, Inorganic Environmental and Applied Geochemistry, Interpretation of Geophysical and Petrophysical Data, Microscale Mineralogy, Geothermics, Ore and Coal, Mineral Exploration and Resources Estimation, Petroleum Geochemistry, Petroleum Systems, Reservoir Engineering, Sedimentology, and Structural Geology.

---

## Course Details

---

<b>Course organisation</b>	It's possible to download the current course curriculum at the end of the following page: <a href="http://www.fgeo.rwth-aachen.de/cms/Geowissenschaften-und-Geographie/Studium/Studiengaenge/Master-courses-of-study/Angewandte-Geowissenschaften/~cajo/Kurzprofil-des-Studiengangs/lidx/1/">http://www.fgeo.rwth-aachen.de/cms/Geowissenschaften-und-Geographie/Studium/Studiengaenge/Master-courses-of-study/Angewandte-Geowissenschaften/~cajo/Kurzprofil-des-Studiengangs/lidx/1/</a>  <a href="#">» PDF Download</a>
<b>A Diploma supplement will be issued</b>	Yes
<b>International elements</b>	<ul style="list-style-type: none"><li>• International guest lecturers</li><li>• Specialist literature in other languages</li><li>• Language training provided</li><li>• Courses are led with foreign partners</li></ul>
<b>Integrated internships</b>	None
<b>Course-specific, integrated German language courses</b>	No
<b>Course-specific, integrated English language courses</b>	No

---

## Costs / Funding

---

<b>Tuition fees per semester in EUR</b>	None
<b>Semester contribution</b>	Approx. 300 EUR per semester (including semester ticket for public transport). There is no special fee for international students.
<b>Costs of living</b>	Please note that single individuals have to give proof of a minimum income of 659 EUR per month at the immigration office in Aachen in order to be eligible for an extension of their residence permits.
<b>Funding opportunities within the university</b>	Yes

Description of the above-mentioned funding opportunities within the university

<http://www.rwth-aachen.de/cms/root/Studium/Im-Studium/~ehg/Stipendien-Foerderung/?lidx=1>

## Requirements / Registration

### Academic admission requirements

- Bachelor of Science or Engineering with at least 180 ECTS
- a minimum of 90 ECTS in geoscientific modules, at least 5 ECTS of which have to be earned in field work
- a minimum of 30 ECTS in mathematics, chemistry, and/or physics modules

### Language requirements

Applicants must provide proof of their English language skills according to RWTH Aachen University regulations at enrolment (not application). An overview about the accepted language certificates can be found here: <https://www.fgeo.rwth-aachen.de/cms/geowissenschaften-und-geographie/Studium/Studierende/Angewandte-Geowissenschaften-und-Georess/~lomb/Sprachkenntnisse/lidx/1/>

### Application deadline

Non-EU applicants: 1 March for the following winter semester (starting in October) or 1 September for the following summer semester (starting in April)

EU applicants: 15 July for the following winter semester (starting in October) or 15 January for the following summer semester (starting in April)

### Submit application to

<http://www.rwth-aachen.de/cms/root/Studium/Vor-dem-Studium/Bewerbung-um-einen-Studienplatz/Master-Bewerbung/~dqml/Bewerbung-Master-Internationale/?lidx=1>

## Services

### Possibility of finding part-time employment

International students may take up work in the private sector during the semester or the semester break for up to three months without having obtained a work permit. Students thus may take up full-time work for 90 days or part-time positions (up to four hours per day) for 180 days. This regulation is also stated on the residence permit. During the semester, students are allowed to take up jobs with up to 19 working hours a week. During the semester break, students may work full-time but only for a maximum of 13 consecutive weeks.

Student assistants are more flexible with regard to working hours because the full- and part-time regulations do not apply. As a student assistant, you are allowed to work up to 19 hours per week throughout the year.

### Accommodation

Studierendenwerk Aachen: <https://www.studierendenwerk-aachen.de/en/housing.html>

Availability of university accommodation in Aachen is limited. Participation in individual allocation procedures is therefore usually required. Because of the high demand for university accommodation, it may be necessary to resort to the private accommodation market.

As family and couple apartments are particularly high in demand, applicants interested in this type of accommodation will almost definitely need to draw on the private accommodation market like the majority of RWTH Aachen University's students.

There are a number of options for finding private accommodation in and around Aachen; the International Office can provide students with information before or upon their arrival. Prices for university accommodation vary between 200 EUR and 330 EUR per month;

accommodation on the private market is priced between 290 EUR and 550 EUR per month, of course depending on the size and the number of rooms. For short-term accommodation, there are many hotels, a few youth hostels and a boarding house located in and around Aachen (reservation is recommended).

#### Career advisory service

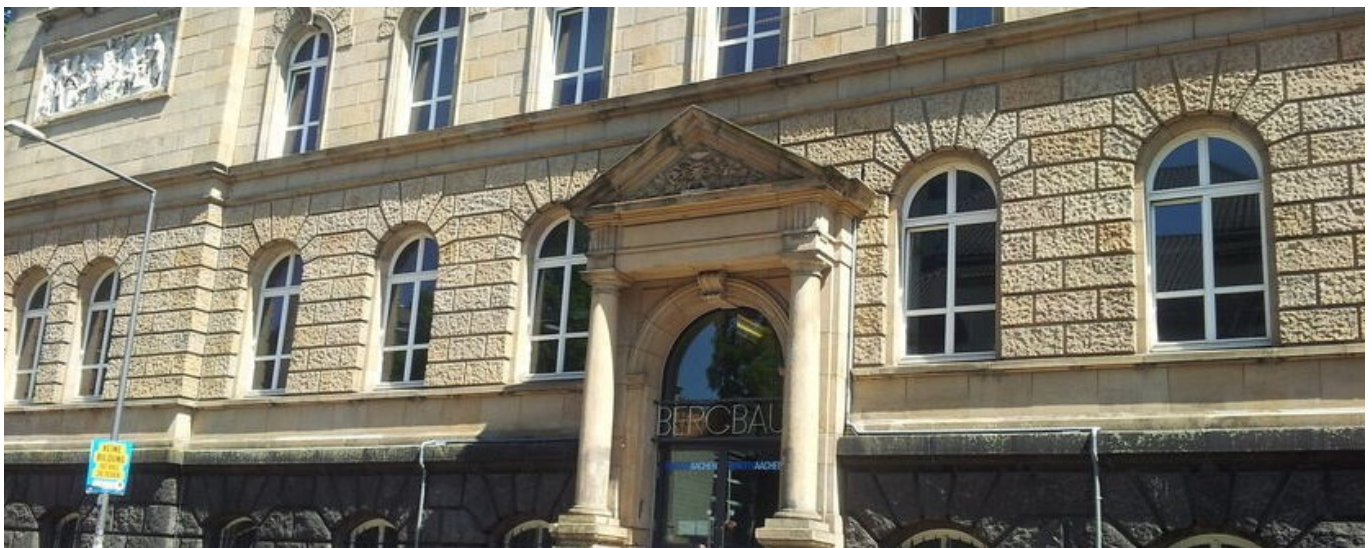
Career Center of RWTH Aachen University:<http://www.rwth-aachen.de/cms/root/Studium/Nachdem-Studium/~ejx/Karriere/?lidx=1>

"Praxisinitiative Aachener Geowissenschaftler" (PAG):<http://www.fgeo.rwth-aachen.de/cms/Geowissenschaften-und-Geographie/Studium/Studierende/Angewandte-Geowissenschaften-und-Georess/~cxve/Praxisinitiative-PAG-/?lidx=1>

#### Support for international students and doctoral candidates

- Buddy programme
- Tutors

## RWTH Aachen University



Miners' Building of RWTH Aachen University

© Fachgruppe Geowissenschaften und Geografie

With 260 institutes in nine faculties, RWTH Aachen University is one of Europe's leading institutions for science and research. Currently, more than 44,500 students are enrolled in 144 academic programmes. More than 8,500 of them are international students hailing from 130 different countries. The scientific education students receive at RWTH Aachen University is firmly rooted in real-world application. As a result, our graduates are highly sought after by businesses to work as trainees and fill executive positions. National and international rankings show that our graduates have a high aptitude for managing complex tasks, constructively solving problems in teams, and taking on leadership responsibilities. Thus, it should come as no surprise that one in five board members of German corporations is an alumnus of RWTH Aachen University.

Work conducted in the research centres at RWTH Aachen University is strongly oriented towards the current needs of industry, commerce, and the professions. This has resulted in numerous innovations, patents, and licences. The individual competence centres at RWTH Aachen University collaborate effectively across departments and faculties in interdisciplinary groups and forums, while still maintaining a strong focus on their own department specialisation. For instance, the computer science and biology departments - and even the social sciences - all have a clear connection to the school's engineering focus. This has been a crucial factor in motivating multinational corporations such as Philips, Microsoft, and Ford to locate their research institutions in the Aachen region.

Excellence in teaching and research constitutes the basis from which RWTH Aachen University works with other leading institutions and technical universities around the world.

## University location

As Germany's westernmost city, Aachen is located on the borders of Belgium and the Netherlands. Its population is about 260,000. Aachen's historic centre around the distinctive cathedral (UNESCO World Heritage Site) is characterised by a student lifestyle. At the city's doorstep, the hilly Eifel landscape with its rivers, lakes, and forests offers a picturesque countryside for outdoor recreation. Aachen benefits from its central location in the heart of Europe!


## Contact

### **RWTH Aachen University**

Division of Earth Science and Geography

Wüllnerstr. 2  
52056 Aachen

 [heinzmann@geol.rwth-aachen.de](mailto:heinzmann@geol.rwth-aachen.de)

 Course website: <https://www.fgeo.rwth-aachen.de/cms/geowissenschaften-und-geographie/Studium/Studiengaenge/Master-courses-of-study/~caat/Angewandte-Geowissenschaften/?lidx=1>

 <https://www.facebook.com/groups/fachstudienberatung/>

Last update 01.12.2024 03:19:45

# International Programmes in Germany - Database

[www.daad.de/international-programmes](http://www.daad.de/international-programmes)  
[www.daad.de/sommerkurse](http://www.daad.de/sommerkurse)

## Editor

DAAD - Deutscher Akademischer Austauschdienst e.V.  
German Academic Exchange Service  
Section K23 – Information on Studying in Germany  
Kennedyallee 50  
D-53175 Bonn  
[www.daad.de](http://www.daad.de)

## GATE-Germany

Consortium for International Higher Education Marketing  
[www.gate-germany.de](http://www.gate-germany.de)

## Disclaimer

The data used for this database was collected and analysed in good faith and with due diligence. The DAAD and the Content5 AG accept no liability for the correctness of the data contained in the "International Programmes in Germany" and "Language and Short Courses in Germany".

The publication is funded by the German Federal Ministry of Education and Research and by contributions of the participating German institutions of higher education.



Federal Ministry  
of Education  
and Research