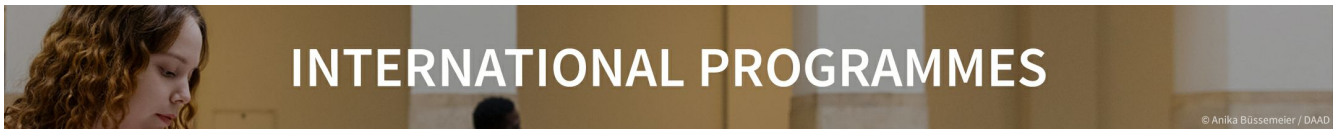




Deutscher Akademischer Austauschdienst  
German Academic Exchange Service



## Table of Contents

<b>Bachelor's degree .....</b>	<b>2</b>
<b>Bachelor's in Management &amp; Technology (BSc) • Technical University of Munich • München.....</b>	<b>2</b>

# Bachelor's degree



## Bachelor's in Management & Technology (BSc)

Technical University of Munich • München



## Overview

Degree	Bachelor of Science
Teaching language	<ul style="list-style-type: none"><li>English</li></ul>
Languages	Students can study in our Bachelor's programme 100% in English if they choose Computer Engineering as their specialisation in technology. The other five specialisations (Chemistry, Electrical & Information Technology, Informatics, Mechanical Engineering and Medicine) are bilingual; the percentage of English instruction depends on the choice of specialisation.
Full-time / part-time	<ul style="list-style-type: none"><li>full-time</li></ul>
Programme duration	6 semesters
Beginning	Winter semester
Additional information on beginning, duration and mode of study	<p>Start of winter semester: October Start of summer semester: April</p> <p>All important information about dates, periods and deadline can be found <a href="#">here</a>.</p>
Application deadline	Application period between 15 May and 15 July (national and international applicants)
Tuition fees per semester in EUR	2,000 EUR
Additional information on tuition fees	Please refer to the following website for more information on tuition fees at TUM: <a href="https://www.tum.de/en/studies/fees/tuition">https://www.tum.de/en/studies/fees/tuition</a> .
Joint degree / double degree programme	No
Description/content	Many companies today are looking for managers with a background in engineering or natural sciences. They need passionate individuals who combine entrepreneurial skills and a detailed knowledge of business with a solid understanding of innovation and technology. Our Bachelor's

programme in Management & Technology gives you the interdisciplinary focus you need, putting you at a distinct advantage when it comes to shaping your career.

The programme combines courses in management (70% of your studies) with options in engineering or natural sciences (30%). We also leave you plenty of room for specialisation and pursuing the areas that interest you the most. Our teaching draws on the latest research and state-of-the-art industrial practice. As well as lectures, we run regular tutorials and small-group seminars. Practical experience is ensured through project studies.

Throughout the course of your studies, we will prepare you for your career in the fields of management or technology by imparting a fundamental understanding of business issues and a basic understanding of technologies and innovations.

When you are nearing graduation, our Career Service Center will be at your disposal to help you launch your professional career. We have strong connections to many leading companies.

#### Current information

You can check [our website](#) for the latest information.

## Course Details

#### Course organisation

Structure:

- Basics in Economics, Law, Management, Mathematics and Natural Sciences
- Specialisation in Technology
- Electives in Management and/or Technology
- Communication Skills
- Project Studies focusing on practical or research issues
- Bachelor's thesis

In their first four semesters, students will acquire basic knowledge in management, economics, law, and mathematics and natural sciences. Starting in the second semester, students will gain insight into their chosen specialisation in technology. Practical experience is ensured through project studies in the fourth or fifth semester. In the upper semesters, students will have the opportunity to deepen their knowledge or specialise in their desired areas of management or technology by choosing electives. They will also improve their communication skills and be able to go abroad in order to gain practical international experience. During the fifth and sixth semesters, our students have the opportunity to complete a semester abroad at one of our partner universities. The programme will be completed with a written Bachelor's thesis in the sixth semester.

In the area of management, you can choose electives in the fields of:

- Innovation & Entrepreneurship
- Marketing, Strategy & Leadership
- Operations & Technology
- Finance & Accounting
- Economics & Policy

You can do your specialisations in the field of technology in:

- Chemistry
- Electrical & Information Technology
- Informatics
- Mechanical Engineering
- Computer Engineering (100% English)
- Medicine (limited number of participants)

A Diploma supplement will be issued

Yes

#### International elements

- International guest lecturers
- Specialist literature in other languages
- Projects with partners in Germany and abroad
- Integrated/optional study abroad unit(s)

#### Integrated/optional study abroad unit(s)

For TUM SOMex (including ERASMUS+), TUM School of Management cooperates directly with more than 100 leading business schools and faculties at renowned universities all around the world. The international exchanges organised by our programme are exclusive to students of TUM School of Management.

TUM School of Management offers students a wide range of options for studying and spending time abroad. All students can apply for an exchange semester at partner universities worldwide. TUM School of Management offers an exchange programme within the area of entrepreneurship at the National University of Singapore (NUS) in collaboration with the NUS Overseas Colleges (NOC), and with the ESADE Business School at Ramon Llull University in Barcelona, Spain.

#### Integrated internships

The project studies module consists of active involvement in a research or practical project connected to the content of the degree programme, carried out by a student team usually in collaboration with a company and an academic chair of TUM School of Management. It is not intended to be a mandatory internship.

Internships are optional. While we cannot directly arrange an internship for you, we provide a wide range of support services, e.g. job board, workshop with corporate partners, career events, etc.

#### Course-specific, integrated German language courses

No

#### Course-specific, integrated English language courses

No

## Costs / Funding

#### Tuition fees per semester in EUR

2,000 EUR

#### Additional information on tuition fees

Please refer to the following website for more information on tuition fees at TUM: <https://www.tum.de/en/studies/fees/tuition>.

#### Semester contribution

All students are required to pay the student union fees for each semester they are enrolled. For details and further information on fees and financial aid, please find more information [here](#).

#### Costs of living

In order to cover personal expenses while studying in Munich, we recommend that students budget approximately 1,200 EUR per month for accommodation, living, health insurance, books, and miscellaneous expenses. Check our [website](#) for information on living in Munich.

#### Funding opportunities within the university

Yes

#### Description of the above-mentioned funding opportunities within the university

Information on funding and financial aid can be found on our [website](#).

Many international students can have their fees waived or receive scholarships to finance them. You

can find [all information on waivers and scholarships](#) here.

## Requirements / Registration

### Academic admission requirements

To qualify for the Bachelor's programme in Management & Technology, applicants need to provide:

1. "Abitur" (university entrance qualification) or equivalent
2. Letter of motivation – maximum two A4 pages
3. Successful completion of the assessment procedure
4. Proficiency in either English or German

We will assess your application with regards to your final "Abitur" grade or final GPA and your four individual mid-year grades ("Halbjahresnoten") in German or English, mathematics, and an advanced natural science.

If we cannot assess your individual grades in the above-mentioned subjects, we will base our assessment on the available grades of your university entrance qualification with an adjusted factor.

Additionally, all applicants (with a German Abitur or an international university entrance qualification) could gain up to four points for evidence of specific extracurricular qualifications or additional qualifications relevant to the study programme.

The result of stage one leads to a direct admission, an admission interview (stage two) or a rejection.

Please find more information to the application process [here](#).

All international applicants with international university entrance qualifications (e.g. secondary level education qualifications) must also apply via [uni-assist](#). Please apply online via TUMonline starting 15 May.

### Language requirements

Applicants have to proof knowledge in German ~~or~~ English for an application for the Bachelor's programme in Management & Technology. For current information and more details regarding accepted language certificates and required scores, please have a look at [this website](#).

Please note that applicants with a German "Abitur" do not have to submit proof of German or English proficiency.

### Application deadline

Application period between 15 May and 15 July (national and international applicants)

### Submit application to

In order to apply at TUM, you need to open a TUMonline account:  
<https://campus.tum.de/tumonline/webnav.ini>.

Our application wizard will guide you step by step through the online application procedure.

For more information, check: <https://www.tum.de/en/studies/application-and-acceptance/online-application/>.

## Services

### Possibility of finding part-

Students may find some interesting job offers especially for TUM School of Management students

Please refer to the following page for more details: <https://www.tum.de/en/studies/during-your-studies/living-and-working/jobs-and-internships>.

#### Accommodation

It's not easy to find a place to live in Munich – but it's not impossible either! The Technical University of Munich (TUM) supports students and staff in their search for accommodation by providing personal advice, housing listings, and useful information to ensure that they can quickly find a place to call their own. Please find more information [here](#).

The Student Union offers almost 11,000 rooms and apartments for students in Munich, Freising, and Rosenheim residences.

#### Career advisory service

TUM School of Management wants all of its students to enjoy a successful and fulfilling career, which starts from the first semester onwards.

We offer a range of support services to help students along this path, for example:

- an online job board, which provides details of current openings at companies - full-time jobs as well as internships, working student jobs, project studies, student assistant jobs at the faculty/school or other part-time jobs (known of as "minijobs" in Germany),
- frequent career events with TUM School of Management's corporate partner companies, during which students can get in touch with Germany's leading employers,
- workshops with corporate partners that may provide useful hints and advice on applying for jobs in Germany.

The TUM Alumni & Career also organises 80+ workshops & online seminars on application, career entry & career planning.

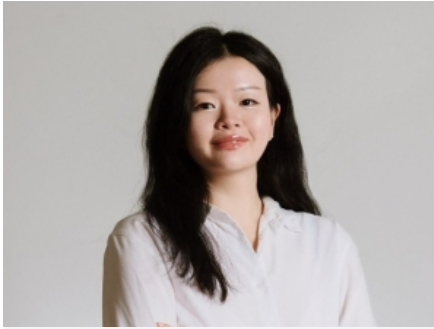
#### Support for international students and doctoral candidates

- Welcome event
- Buddy programme
- Specialist counselling

#### General services and support for international students and doctoral candidates

We offer both online and on-site welcome and information sessions. The Student Counselling Team of the Bachelor's in Management and Technology offers 30-minute short events based on the topics and questions commonly asked by the students, for example, how to ace project studies, how to finish the degree with a superb Bachelor's thesis, or how to select the elective courses. Regular consultation hours online, on the phone and on site are offered, too.

The TUM Management Alumni eV association offers opportunities to exchange experiences among graduates, faculty members and students, to organise scientific and practice-oriented events as well as collaborate with similar organisations and companies, and it offers prizes and scholarships.



©TUM School of Management

**Dalia Menglinova**  
Bachelor's student in  
Management & Technology

The programme offers flexibility in choosing technical and business courses that provide valuable insights. But it is not just the flexibility that makes it special – great academic mobility programmes, connections with partner universities, and campus life that allows me to express myself – and all of these factors make my time here more enjoyable and memorable.



## TUM School of Management – What Makes Us, What Drives Us

We are curious about YOU, the new thinkers with imagination, the creators of a sustainable world and doers with entrepreneurial spirit. We are home to excellent students, scientists & entrepreneurs, who contribute to solutions for societal challenges. Deeply intertwined with economy, we teach and drive best practice by uniting management and technology. Check out our programmes and positions!

» more:

[https://www.youtube.com/watch?v=s\\_I\\_RasjsDQ](https://www.youtube.com/watch?v=s_I_RasjsDQ)

# Technical University of Munich



© TUM School of Management

TUM School of Management is part of the Technical University Munich (TUM). TUM is one of Europe's leading research universities, with around 600 professors, 50,000 students, and 11,000 academic and non-academic staff. The focus areas of TUM are engineering sciences, natural sciences, life sciences and medicine, combined with social sciences and economics.

TUM was one of the first universities in Germany to be awarded the title “University of Excellence”. It is represented worldwide with the TUM Asia campus in Singapore as well as offices in Beijing, Brussels, Cairo, Mumbai, San Francisco, and São Paulo.

TUM School of Management, firmly rooted within the TUM’s technological and entrepreneurial ecosystem, places a unique focus on the interface between management, engineering and the natural and life sciences. The school’s goal is to bridge the traditional gap between the fields of management and technology and sees its role in educating the leaders and decision-makers of tomorrow. Like TUM, it is committed to excellence. Since its foundation two decades ago, it has been consistently ranked as one of the top business schools in Germany and beyond.

TUM School of Management belongs to the top one percent of business schools worldwide that hold Triple Crown accreditation by the Association of MBAs (AMBA), the European Foundation for Management Development (EQUIS) and the Association to Advance Collegiate Schools of Business (AACSB). Triple Crown accreditation is internationally recognised as a seal of quality for business schools.



## University location

### Multiple locations, more possibilities

TUM School of Management operates in five distinct locations, each of them carefully chosen for the possibilities that they offer to interact with other disciplines and the corporate world.

Besides our original Munich and Weihenstephan campuses, we also offer research and teaching in Heilbronn, Straubing, and Garching. At each of these sites, we cooperate with regional actors, pooling our strengths to offer world-class conditions for study, research and entrepreneurship.

## Contact

### Technical University of Munich

TUM School of Management

Silvana Rueda Urrea

Arcisstraße 21  
80333 München

Tel. +49 89 28925543

✉ [admission@mgt.tum.de](mailto:admission@mgt.tum.de)

🌐 Course website: <https://www.mgt.tum.de/programs/bachelor-management-technology/munich>

📘 <https://de-de.facebook.com/TU.Muenchen>

🐦 [https://twitter.com/tu\\_muenchen](https://twitter.com/tu_muenchen)

🌐 <https://www.linkedin.com/school/technische-universitat-munchen/>

📷 <https://www.instagram.com/tu.muenchen/?hl=de>

📺 <https://www.youtube.com/c/TUMSchoolofManagement/featured>

Last update 22.11.2024 00:43:47

# International Programmes in Germany - Database

[www.daad.de/international-programmes](http://www.daad.de/international-programmes)  
[www.daad.de/sommerkurse](http://www.daad.de/sommerkurse)

## Editor

DAAD - Deutscher Akademischer Austauschdienst e.V.  
German Academic Exchange Service  
Section K23 – Information on Studying in Germany  
Kennedyallee 50  
D-53175 Bonn  
[www.daad.de](http://www.daad.de)

## GATE-Germany

Consortium for International Higher Education Marketing  
[www.gate-germany.de](http://www.gate-germany.de)

## Disclaimer

The data used for this database was collected and analysed in good faith and with due diligence. The DAAD and the Content5 AG accept no liability for the correctness of the data contained in the "International Programmes in Germany" and "Language and Short Courses in Germany".

The publication is funded by the German Federal Ministry of Education and Research and by contributions of the participating German institutions of higher education.



Federal Ministry  
of Education  
and Research