



Deutscher Akademischer Austauschdienst
German Academic Exchange Service



Table of Contents

Master's degree	2
European Master's in Medical Technology and Healthcare Business • Hamburg University of Applied Sciences • Hamburg	2

Master's degree



European Master's in Medical Technology and Healthcare Business

Hamburg University of Applied Sciences • Hamburg

Overview

Degree	European Master of Science in Medical Technology and Healthcare Business (EMMAH)
Teaching language	<ul style="list-style-type: none">English
Languages	Classes are in English.
Full-time / part-time	<ul style="list-style-type: none">full-time
Programme duration	4 semesters
Beginning	Winter semester
Additional information on beginning, duration and mode of study	This course is taught in person only. There is not an option to study online.
Application deadline	<p>Application period:</p> <p>1 to 30 April (programme start: September)</p> <p>Please have your school and Bachelor certificates checked first by uni-assist (www.uni-assist.de) to get a VPD ("Vorprüfungsdokumentation") BEFORE applying to HAW Hamburg.</p> <p>With your VPD, please apply using the HAW Hamburg online application portal. Here is the link: https://bit.ly/3rZjmt3.</p> <p>The HAW Hamburg online application portal is open during the application period only.</p> <p>You do not need to send your documents with the postal mail to complete your application.</p>
Tuition fees per semester in EUR	Varied
Additional information on tuition fees	<ul style="list-style-type: none">Hamburg: no tuition fees (semester contribution only)Porto: 475 EUR tuition fees (Erasmus+ students do not have to pay this fee)Lille: no tuition fees
Combined Master's degree / PhD programme	No
Joint degree / double degree	Yes

programme

Description/content

Study in three countries and get a European Master's degree.

Medical Technology and Healthcare Business is a leading growth sector in national and global markets. Innovations are still ahead for many key technologies in the field (e.g., physiological and technical control loops, medical imaging, or assisted minimally invasive surgery). Globalisation of markets and a strong customer orientation create excellent employment and career chances.

This Master's degree gives you the opportunity to study in Germany, Portugal and France and get a European insight into this field. A European Master's degree in Medical Technology and Healthcare Business increases your employability over a huge spectrum of positions and responsibilities:

- Research and Development
- Product Management
- Marketing and Sales
- Quality Management
- Maintenance and Repair
- Training and Education
- Safety Adviser
- Hospital Planning

This course is taught in person only. There isn't an option to study online.

Course Details

Course organisation

The first semester in Hamburg, Germany, deals with the engineering and technology side of this field. The core curriculum consists of the following modules: Project Seminar in Engineering, Data Acquisition and Processing, Advanced Biosignal Processing, Modelling Medical Systems, Simulation and Virtual Reality in Medicine and HTA/Regulatory Affairs.

The second semester in Porto, Portugal, looks at the training in clinical application for the application of technical know-how. The core curriculum consists of the following modules: Project Seminar in Health, Medical Imaging Technologies and Devices, Medical Measurement Techniques, Applied Clinical Imaging, Applied Clinical Signals and Human-Technology Interaction on Clinical Environment.

The third semester in Lille, France, looks at the business background of this field. The core curriculum consists of the following modules: Project Seminar in Healthcare Business, Principles of Marketing in the Healthcare Business, International Healthcare Marketing and Business, Marketing for Innovative Medical Technology, Legal and Regulatory Considerations in the Healthcare Industry and Industrial Purchasing, Outsourcing in the Healthcare Industry.

In the fourth semester, students complete their Master's theses, in which they demonstrate their achieved competence in research and development preferably in interdisciplinary settings. This can be completed in any country.

This course is taught in person only. There isn't an option to study online.

For more detailed information on modules and course content, please click on the PDF link below.

[» PDF Download](#)

A Diploma supplement will be issued

Yes

International elements

- Integrated study abroad unit(s)

Integrated study abroad unit(s)	<p>Students complete this degree in three countries:</p> <p>Semester 1: Hamburg, Germany (HAW Hamburg)</p> <p>Semester 2: Porto, Portugal (Instituto Polytecnico do Porto-Escola Superior de Tecnologia da Saúde do Porto)</p> <p>Semester 3: Lille, France (Université de Lille II - Faculté Ingénierie et Management de la Santé)</p> <p>Semester 4: any country</p> <p>The programme is taught completely in English.</p>
Integrated internships	This programme does not include an integrated internship. The Master's thesis can be completed in industry.
Course-specific, integrated German language courses	No
Course-specific, integrated English language courses	No

Costs / Funding

Tuition fees per semester in EUR	475 EUR
Additional information on tuition fees	<ul style="list-style-type: none"> • Hamburg: no tuition fees (semester contribution only) • Porto: 475 EUR tuition fees (Erasmus+ students do not have to pay this fee) • Lille: no tuition fees
Semester contribution	<p>There is a semester contribution of approx. 340 EUR (as of July 2022). This fee provides you with a semester ticket for unlimited travel on Hamburg's public transport system. More information about studying and living in Hamburg can be found here: https://www.haw-hamburg.de/en/international/international-students/</p>
Costs of living	Hamburg is a relatively expensive city. Depending on your lifestyle, you should expect living costs of 700 to 900 EUR for rent, food, and other expenses.
Funding opportunities within the university	Yes
Description of the above-mentioned funding opportunities within the university	<p>Students can apply for scholarships for academic excellence. They can also apply for an examination scholarship when they are in their final semester as a financial support while completing their Master's thesis. More information can be found here: https://www.haw-hamburg.de/en/international/international-students/</p>

Requirements / Registration

Academic admission requirements	<ul style="list-style-type: none"> • Bachelor's degree (in related disciplines) qualifying for a professional career or a comparable course of studies of at least three years or a diploma from a university
--	--

- Proof of German language ability for international applicants (see language requirements)
- Proof of English language ability (if English is not your first language - see language requirements)
- Applicants holding a first academic degree (Bachelor's, diploma, etc.) from non-EU countries are required to take the Graduate Record Examination (GRE) – for further information, see www.gre.org.
- Curriculum vitae
- Statement of motivation
- Letter of recommendation from a university professor (optional)

Uni-assist (VPD) (www.uni-assist.de): Students who completed their school education outside Germany must have their high school and Bachelor certificates checked by uni-assist and receive a VPD BEFORE applying to the HAW Hamburg. The VPD from uni-assist must be uploaded as part of the application process at HAW Hamburg. Please be advised that the uni-assist VPD process can take six to eight weeks, so please apply early.

More information about academic requirements can be found here: <https://bit.ly/3iIABHK>

Language requirements

All applicants whose first language is not English must provide one of the following language certificates:

TOEFL min. score: 87 (Internet-based)

IELTS min. score: band 5.5

CAE (Cambridge Certificate in Advanced English) min. score: C

CPE (Cambridge Certificate in Proficiency in English) min. score: C

FCE (Cambridge First Certificate) min. score: C

or certificates about good performance in foreign countries

"Abitur"/"Fachhochschulzeugnis" is also accepted.

International students must also provide a certificate of attendance in a German language course with a duration of at least 200 hours with their application. This is for lab safety reasons.

Application deadline

Application period:

1 to 30 April (programme start: September)

Please have your school and Bachelor certificates checked first by uni-assist (www.uni-assist.de) to get a VPD ("Vorprüfungsdocumentation") BEFORE applying to HAW Hamburg.

With your VPD, please apply using the HAW Hamburg online application portal. Here is the link: <https://bit.ly/3rZjmt3>.

The HAW Hamburg online application portal is open during the application period only.

You do not need to send your documents with the postal mail to complete your application.

Submit application to

Students must apply online during the application period: The link to apply is here: <https://bit.ly/3iIABHK>.

Services

Possibility of finding part-time employment

You should plan to be able to study in Hamburg without having to work part-time. If you are coming on a visa, you will have to provide proof of your finances (853 EUR/month – 10,236 EUR/year).

EU students can work 20 hours/week.

International students from non-EU countries are only permitted to work 120 full days (240 half days) in one calendar year, and part-time job opportunities are limited, especially for students who

do not speak German. It is unlikely that we will be able to offer you a job on campus.

More information can be found here, under Visa & Paperwork:

<https://www.haw-hamburg.de/en/international/international-students/>

Accommodation

It is not easy to find accommodation in Hamburg, so please be aware that finding somewhere to live can take a while. The halls of residence in Hamburg are run by the Studierendenwerk Hamburg and offer affordable accommodation for students under the age of 30. Generally, students have their own rooms in an apartment that they share with other students – the bathroom and kitchen are communal. The monthly rent for a room in a student hall of residence starts at roughly 250 EUR (including heating, water, and electricity). At the earliest, new students can apply three months before the start of their degree programme.

Further information on accommodation can be found on the university's website:

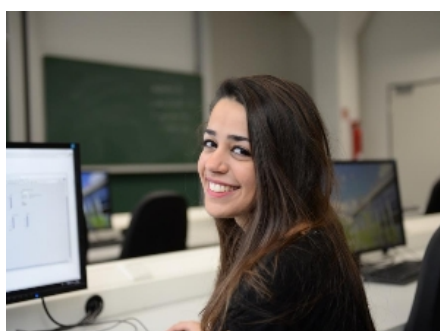
<https://www.haw-hamburg.de/en/study/campus-life/accommodation/>.

Career advisory service

The HAW Hamburg has a Career Service Office that offers advice on working in Germany, finding internships and applying successfully for jobs in Germany.

Support for international students and doctoral candidates

- Welcome event
- Buddy programme
- Tutors



©HAW Hamburg

Nouéna El Hamed
MSc European Master
Medical Technology and
Healthcare Business



HAW Hamburg in 120 seconds

HAW Hamburg in 120 seconds

» more:

<https://www.youtube.com/watch?v=q0h5lomi5sw>

"I am still not entirely sure what my dream job could be, so it is interesting for me to get an insight into different technical, scientific and business skills in order to be flexible. And the great thing about this programme is that you get to study in different countries and learn new languages while improving your English, enriching your cultural knowledge and broadening your horizons at the same time."

— Hamburg University of Applied Sciences —



HAW Hamburg Bergedorf campus – Faculty of Life Sciences

© HAW Hamburg/Paula Markert

Hamburg University of Applied Sciences (HAW Hamburg) is one of the largest of its kind in Germany and within our four faculties we offer a wide range of Bachelor's and Master's programmes in engineering, IT, life sciences, design and media as well as business and social sciences. We focus on applied sciences in our teaching, giving our students a practical insight into their fields of study through projects, lab work, internships and theses in industry. Our expertise is drawn from faculty members who have worked in industry before joining the university. In research, we are an important partner for the city of Hamburg's companies and innovation clusters, developing new ideas from the synergies of this dynamic location.

Our fields of expertise reflect the technologies, industries and services that make Germany a leading economy, and our close collaboration with Hamburg's innovation clusters allows us to develop this knowledge in our teaching and research.

We are a very international university, with students from over 100 countries making up 16% of our students. Combined with the international nature of the city of Hamburg, you will feel very comfortable studying here.

Read more about the city and what our students say: <https://bit.ly/3bq2r13>



University location

In the north of Germany and in the heart of Europe, Germany's second largest city (1.8 million) offers excellent quality of life and international flair. If you like to spend your leisure time outdoors, then you will love Europe's "greenest" city with its lake, canals and beautiful parks. For those of you who love culture, Hamburg's museums, theatres and its world famous concert hall, the Elbphilharmonie, will inspire you. Hamburg is also one of the most dynamic commercial centres in Europe, placing its strategic focus on six innovative segments: aviation (Airbus), IT and media, the international port and logistics, life sciences (biotechnology, medical technology and health care), nanotechnology, and renewable energies. The Economist ranked Hamburg as one of the top ten most liveable cities in the world, so we are sure you will feel at home.

Contact

Hamburg University of Applied Sciences
Faculty of Life Sciences
Department of Biomedical Engineering

Ulmenliet 20
21033 Hamburg

✉ bernd.flick@haw-hamburg.de

🌐 Course website: <https://www.haw-hamburg.de/en/study/degree-courses-a-z/study-courses-in-detail/course/courses/show/european-master-of-medical-technology-and-healthcare-business/Studieninteressierte/>

📘 <https://www.facebook.com/HAWHamburg.InternationaleStudierende>

📷 <https://www.instagram.com/hawinternational/>

Last update 02.02.2023 02:59:02

International Programmes in Germany - Database

www.daad.de/international-programmes
www.daad.de/sommerkurse

Editor

DAAD - Deutscher Akademischer Austauschdienst e.V.
German Academic Exchange Service
Section K23 – Information on Studying in Germany
Kennedyallee 50
D-53175 Bonn
www.daad.de

GATE-Germany

Consortium for International Higher Education Marketing
www.gate-germany.de

Disclaimer

The data used for this database was collected and analysed in good faith and with due diligence. The DAAD and the Content5 AG accept no liability for the correctness of the data contained in the "International Programmes in Germany" and "Language and Short Courses in Germany".

The publication is funded by the German Federal Ministry of Education and Research and by contributions of the participating German institutions of higher education.



Federal Ministry
of Education
and Research