



Deutscher Akademischer Austauschdienst
German Academic Exchange Service



Table of Contents

Master's degree	2
International Management & Sustainability • Ostbayerische Technische Hochschule Amberg-Weiden (OTH) • Weiden in der Oberpfalz	2

Master's degree



International Management & Sustainability

Ostbayerische Technische Hochschule Amberg-Weiden (OTH) • Weiden in der Oberpfalz



Overview

Degree	Master of Arts MA
Teaching language	<ul style="list-style-type: none">English
Languages	Courses are held in English. Some electives are also offered in German. Participants can choose to write the Master's thesis in either English or German.
Full-time / part-time	<ul style="list-style-type: none">full-time
Programme duration	3 semesters
Beginning	Winter and summer semester
Additional information on beginning, duration and mode of study	Study and examination periods are typically from 1 October to 14 February (winter semester) and 15 March to 31 July (summer semester).
Application deadline	Winter semester application period For the winter semester starting 1 October, you can apply from 1 May until 15 July . Summer semester application period For the summer semester starting 15 March, you can apply from 15 November until 15 January .
Tuition fees per semester in EUR	None
Combined Master's degree / PhD programme	No
Joint degree / double degree programme	No
Description/content	Are you interested in sustainable corporate management? Do you want to take responsibility for a sustainable economy and learn how to develop and promote business models in an international

context? Do you want to be able to work internationally, lead a team and inspire people to act responsibly? Then the Master's degree programme in [International Management & Sustainability](#) provides you with everything you need for an international career.

Global markets are characterised by change and fierce competition. In order to be able to grow and export, not only corporations but also medium-sized and smaller companies have long since made a name for themselves on the international stage or are planning to expand. In addition, Greta Thunberg's messages have been on everyone's lips and on all screens ever since questions of sustainable corporate development and a future-oriented sustainable economy and lifestyle have become more and more anchored in people's consciousness. Companies are therefore faced with the question of whether their business models are sustainable, ecologically and socially compatible, and viable in the long term.

In the [Master's degree programme in International Management & Sustainability](#), we show you how to turn these challenges into opportunities. In addition to the important linguistic expertise, you will also acquire international knowledge and intercultural skills. The Master's programme combines current issues from the fields of "International Management" (including strategic management, value chains, project management) and "Sustainability" (including climate change, environmental economics, sustainability management and social entrepreneurship). The range of subjects is supplemented by basic knowledge of general management and corporate responsibility. In addition to business administration training, you will work on your personal development and leadership skills. Upon successful completion of your studies, you will be awarded the Master of Arts MA academic degree. This will enable you to start your career as broadly trained experts with management responsibility in a global environment as well as in sustainability management or innovation management.

We inspire leadership and encourage innovation. Come to the [Weiden Business School](#) at [OTH Amberg-Weiden!](#)

Course Details

Course organisation

The Master's programme in [International Management and Sustainability](#) is a consecutive programme with an application-oriented profile. It is aimed at prospective students who have already completed a university degree in an economic, social or cultural science field.

The Master's programme teaches students entrepreneurial skills and leadership competencies to work successfully and responsibly in a globally operating company. In addition, the programme offers students opportunities to deepen their knowledge in the areas of international management, sustainability, general management and corporate responsibility in order to achieve their individual goals.

In the first two semesters, the following courses are offered from the field of "International Management":

- International Strategic Management
- International Projects – Processes and Change Management
- Intercultural Management & Business Ethics
- Globalisation & International Value Chain Management

The following events are read in the "Sustainability" section:

- General Sustainable Development
- Environment, Climate Change & Ecology
- Environmental & Sustainable Economics
- Corporate Sustainability Management

We also offer electives from the areas of "General Management", "Corporate Responsibility" & "Key Qualifications", for example:

- Corporate Governance, Compliance & CSR
- Designing Workshops for Sustainable Product Development
- Organisational & Social Psychology

- Social Entrepreneurship & Sustainable Innovation

In the third semester, you will attend the "Service Learning" course and write your final thesis, including a colloquium.

The following diagram gives you an overview of the course of studies:

» [PDF Download](#)

A Diploma supplement will be issued	Yes
International elements	<ul style="list-style-type: none"> • Language training provided • Training in intercultural skills • Study trips • Projects with partners in Germany and abroad • International guest lecturers • Courses are led with foreign partners • International comparisons and thematic reference to the international context
Course-specific, integrated German language courses	No
Course-specific, integrated English language courses	No

Costs / Funding

Tuition fees per semester in EUR	None
Semester contribution	Student union fee 72 EUR + semester ticket 90 EUR. Total 162 EUR per semester
Costs of living	The cost of living varies from approx. 750 EUR to 800 EUR.
Funding opportunities within the university	Yes
Description of the above-mentioned funding opportunities within the university	A few scholarships are available. For further information, please visit scholarships and funding models or contact our scholarship advising team.

Requirements / Registration

Academic admission requirements	Applicants from outside the European Union need to have their degrees verified by an independent organisation (e.g. uni-assist) before applying to the university. Only for Indian students: The APS certificate is mandatory before uni-assist will provide you with your Vorprüfungsdokumentation/VPD.
--	--

More information on the general applications process can also be found [here](#).

The International Management & Sustainability Master's degree programme requires applicants to pass an **aptitude test**. You can apply for a place within the application period in the [application portal of the OTH Amberg-Weiden](#).

Please note: In some years, the application period is extended. Please check our website for last minute applications.

Applicants with a school-leaving certificate at a foreign school are advised to submit a certificate of recognition of the school-leaving certificate issued by a certified institution (e.g. [uni-assist](#)) by the end of the application period. The decision on admission to studies is made by the examination board. (IMPORTANT NOTE: An assessment of the degree can certainly be carried out before applying for a place at university. However, this assessment does not make an application to the OTH Amberg-Weiden unnecessary.)

The admission requirements for the Master's degree programme in International Management & Sustainability can be found on the [website of the programme](#).

Language requirements

A special feature of the programme is that it is held in English. Therefore, adequate knowledge of the **English** language must be demonstrated with a language certificate corresponding to level B2 according to the Common European Framework of Reference for Languages. One of the following English language tests with the specified minimum score is sufficient: TOEFL IBT – 80 / IELTS Cambridge – 6 / TOEIC – 780. Proof is not required if the university entrance qualification or university degree was obtained in English.

Proof of German language skills at level A2 must be submitted before you begin your studies, i.e. at the latest at the time of your official enrolment. This is obviously not required if your previous studies or university entrance qualification were completed in German. Accepted certificates are the Goethe certificate, telc, and ÖSD certificate. During the Master's programme, German language skills must be expanded to level B1 (e.g. through German courses, internships or independent study).

Application deadline

Winter semester application period

For the winter semester starting 1 October, you can apply from **1 May until 15 July**.

Summer semester application period

For the summer semester starting 15 March, you can apply from **15 November until 15 January**.

Submit application to

You can apply electronically during our application period on the following website: [Application Portal](#)

Services

Possibility of finding part-time employment

Several internationally operating companies are located in Weiden, which regularly offer internships and working student activities.

The curriculum also gives students the opportunity to work part-time.

Accommodation

There are student dormitories as well as private apartments or rooms available in and around Weiden.

Student dorms are located within walking distance of the campus. The apartments have a small kitchen unit and a bathroom with a shower. The dorms offer a recreation room and a laundry room.

All of them have special apartments for disabled students and for students with children.

Please note that there is only a limited number of rooms available in the dorms. You need to apply separately for a room in the student dorms. There might be a waiting list.

"Fischerberg" student dorm in Weiden (60 places)

Rent: 302 EUR to 317 EUR (including advance payment of running costs), deposit: 380 EUR

"Am Postkeller" student dorm in Weiden (105 places) Rent: 313 EUR (including advance payment of running costs), deposit: 470 EUR

If you do not directly get a room in the student dormitory, please check for other possible accommodations in and around Weiden. See also the following [link](#).

Career advisory service

For the advisory service, please contact [the International Office](#) or the [Study and Career Service](#).

Support for international students and doctoral candidates

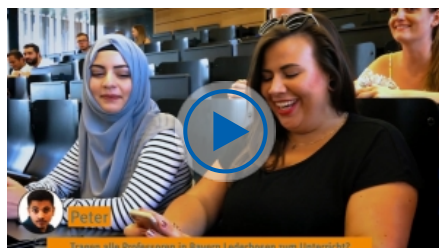
- Welcome event
- Tutors
- Accompanying programme
- Specialist counselling
- Visa matters
- Buddy programme



©Katharina Timm

Katharina Timm
BA

"After an international Bachelor's degree in business studies, I wanted a Master's degree that combined my background with my interest in ethical business practices. With IMS, I found the perfect fit, with classes deepening key skills like strategic decision making and teaching components of fair business practices. From human rights and corporate compliance to climate change, IMS covers various relevant fields and offers a steep learning curve for future professionals."



Impressions from the Weiden Business School at the OTH Amberg-Weiden

This video gives you an inside look at Weiden Business School – what the campus and dorms are like, how classes are taught here, and how we celebrate together. Have fun watching!

» more:
<https://youtu.be/Zdws8FNjKPM>

Amberg-Weiden (OTH)



Ostbayerische Technische Hochschule (OTH) Amberg-Weiden / Technical University (OTH) Amberg-Weiden – Weiden campus

© Ostbayerische Technische Hochschule (OTH) Amberg-Weiden / Technical University (OTH) Amberg-Weiden

To get a first impression of what our university has to offer, please take a look at our short [OTH Amberg-Weiden Image Film!](#)

Portfolio and departments

[OTH Amberg-Weiden](#) is a university with a very unique and international profile. About 25% of all students studying at our university are international students. The university offers around 50 study programmes in four departments (Industrial Engineering and Healthcare, [Weiden Business School](#), Mechanical Engineering / Environmental Engineering, Electrical Engineering / Media / Computer Sciences), which all reflect current developments in engineering and the economy.

The university cultivates a unique model of co-operations and partnerships with companies, guaranteeing a direct transfer of knowledge and experience between teaching and practice, science and the economy.

Study Programmes

The university offers German and English taught programmes. To learn more about our programmes, take a look at the following website on our [study programmes](#).

Services

OTH Amberg-Weiden places strong emphasis on service. A staff-to-student ratio of 1:40 ensures excellent conditions for students. Discussions during lectures, small groups and close contact between students and staff are simply taken for granted. The Student Office (Admission Office), Study and Career Service and International Office of the university are in close contact with applicants and students. The [Student Office](#) is responsible for the application and admission procedures.

Research

The OTH Amberg-Weiden is firmly rooted in the region of the Upper Palatinate, working in close collaboration with renowned regional, national and international businesses, which in turn benefit from the OTH's expertise and innovative strength. The university has very close relationships with more than 30 member companies of the [PartnerCircle](#), a close network of the most renowned companies in the region.

Key benefits:

- Small student groups
- No tuition fees
- State-of-the-art infrastructure
- 24/7/365 library
- Fast and easy contact with lecturers
- Close linking of theory and practice

- Top business contacts for optimal career opportunities during and after your studies (PartnerCircle)
- Contact with many partner universities worldwide
- Favourable rental prices and living costs in comparison to other German cities
- Varied sports and activities indoors and outdoors



University location

Weiden and Amberg with their centuries-old history offer plenty of culture, sports and culinary events. Highlights like old city celebrations, Christmas markets, sporting events, traditional Bavarian festivities, art or music festivals amongst others will make you feel at home soon.

Just see for yourself!

[Weiden image film](#)

[Amberg image film](#)


Contact

Ostbayerische Technische Hochschule Amberg-Weiden (OTH)


WEIDEN BUSINESS SCHOOL (Faculty of Business Studies)

Hetzenrichter Weg 15
92637 Weiden in der Oberpfalz

 la.fischer@oth-aw.de


 Course website: <https://www.oth-aw.de/en/studies/study-offers/study-programmes/master-degree-programs/international-management-sustainability-ims/program-international-management-sustainability/>
Theresa Schreiber

Tel. +49

 [Email](#)

 <https://www.facebook.com/OTHAmbergWeiden/>

 <https://www.linkedin.com/school/oth-amberg-weiden/>

 <https://www.instagram.com/othambergweiden/>

 <https://www.youtube.com/watch?v=5-Q161EuQL4>

Last update 02.10.2023 06:23:41

International Programmes in Germany - Database

www.daad.de/international-programmes
www.daad.de/sommerkurse

Editor

DAAD - Deutscher Akademischer Austauschdienst e.V.
German Academic Exchange Service
Section K23 – Information on Studying in Germany
Kennedyallee 50
D-53175 Bonn
www.daad.de

GATE-Germany

Consortium for International Higher Education Marketing
www.gate-germany.de

Disclaimer

The data used for this database was collected and analysed in good faith and with due diligence. The DAAD and the Content5 AG accept no liability for the correctness of the data contained in the "International Programmes in Germany" and "Language and Short Courses in Germany".

The publication is funded by the German Federal Ministry of Education and Research and by contributions of the participating German institutions of higher education.



Federal Ministry
of Education
and Research