



Deutscher Akademischer Austauschdienst
German Academic Exchange Service



Table of Contents

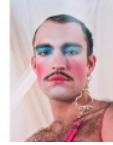
Master's degree	2
Photography (MA) • SRH Universities • Berlin	2

Master's degree



Photography (MA)

SRH Universities • Berlin



Overview

Degree	Master of Arts
Teaching language	<ul style="list-style-type: none">English
Languages	The programme is taught in English.
Full-time / part-time	<ul style="list-style-type: none">full-time
Programme duration	4 semesters
Beginning	Winter and summer semester
Additional information on beginning, duration and mode of study	Intakes: April & October
Application deadline	<p>Non-EU/EEA applicants: Please apply by 1 February (April intake) or 15 August (October intake). We also recommend that you apply early (at least four months before the start of your programme).</p> <p>EU/EEA applicants: Please apply by 1 April (April intake) or 1 October (October intake).</p>
Tuition fees per semester in EUR	5,700 EUR
Additional information on tuition fees	<ul style="list-style-type: none">Non-EU/EEA tuition fees: 5,700 EUR per semesterEU/EEA (including Switzerland, Western Balkans and Ukraine) tuition fees: 790 EUR per month <p>Please note: The monthly/semester tuition fees remain the same for the entire duration of the study programme.</p>
Combined Master's degree / PhD programme	No
Joint degree / double degree	No

Description/content

The state-recognised Master's programme in Photography offers students an opportunity to deepen their knowledge of photography, with a focus on intersections of photographic and creative practice, theoretical concepts, and philosophical questions. This connection between theory and practice is considered in terms of cultural, social, and historical contexts. Existing patterns of thinking are questioned and expanded through radical perspectives. Developing a critical eye for both their own concepts and photographic images and those of others enables students to develop their own insightful approaches and individual visual languages. The programme also sheds light on media and its functions and is designed with enough flexibility to allow each student to find the right platform for honing his or her own photographic orientation and approach to artistic practice.

Course Details

Course organisation**First semester**

- Orientation in the Medium: Photography Lab I, Core Integrated Practice I, Encountering the Image
- Individual Development: Photography Lab II, Core Integrated Practice II, Methods of Image Analysis
- Work in Progress: Photography Lab III, Core Integrated Practice III, Images in Context
- Core Project
- History of Photography
- Site-Specific Learning

Second semester

- Image and Medium: Printed Matter, Advanced Integrated Practice I, Foundations of Media Theory
- Photograph as Object: Photo Book, Advanced Integrated Practice II, Advance Research Methodologies
- Boundaries of the Medium: Photographic Print, Advanced Integrated Practice III, Theory of lens-based Media
- Advanced Project Print
- Issues in Contemporary Photography
- Excursion

Third semester

- Spatial Shift: Spatial Practice, Expanded Integrated Practice I, Interdisciplinary Approaches to Media
- Photograph and Space: Expanded Photography, Expanded Integrated Practice II, Contemporary Media Theory
- Beyond Photography: Spatial Intervention, Expanded Integrated Practice III, After Photography
- Expanded Project Space – Manifesto
- Critical Perspectives on Photography
- Back to the Future

Fourth semester

- Master's Colloquium
- Master's Thesis

A Diploma supplement will be issued

Yes

International elements

- Projects with partners in Germany and abroad

Course-specific, integrated German language courses	No
Course-specific, integrated English language courses	No

Costs / Funding

Tuition fees per semester in EUR	5,700 EUR
Additional information on tuition fees	<ul style="list-style-type: none"> • Non-EU/EEA tuition fees: 5,700 EUR per semester • EU/EEA (including Switzerland, Western Balkans and Ukraine) tuition fees: 790 EUR per month <p>Please note: The monthly/semester tuition fees remain the same for the entire duration of the study programme.</p>
Semester contribution	199.80 EUR for a discounted semester ticket that students can use for public transport in and around Berlin for a duration of six months
Funding opportunities within the university	Yes
Description of the above-mentioned funding opportunities within the university	<ul style="list-style-type: none"> • SRH Berlin University of Applied Sciences is offering partial scholarships for talented international students. • EU students can also benefit from our range of "study now – pay later" financing options. • Please check our website for more information: https://www.srh-berlin.de/en/study-at-srh/financing-your-studies/.

Requirements / Registration

Academic admission requirements	<ul style="list-style-type: none"> • Bachelor's degree • Two or three creative works- you can also add more works to your portfolio • Secondary School Certificate • Proof of English language proficiency • Letter of motivation • Curriculum vitae • Copy of your passport/ID
Language requirements	<p>The following English proficiency tests are accepted:</p> <ul style="list-style-type: none"> • TOEFL Internet-based: 87 • TOEIC listening/reading: 785, speaking: 160, writing: 150 • IELTS (academic): 6.5 • CAE (grades A, B, or C) • CPE (grades A, B, or C) • FCE (grade A, B or C) • Pearson English Test Academic (PTE-A): 59 points • Linguaskill: 176 - 184 (CES) - all four skills required

- B2 First: 173
- Duolingo: 95 points

Application deadline

Non-EU/EEA applicants: Please [apply](#) by 1 February (April intake) or 15 August (October intake). We also recommend that you apply early (at least four months before the start of your programme).

EU/EEA applicants: Please [apply](#) by 1 April (April intake) or 1 October (October intake).

Submit application to

Please use our [online application system](#) to submit your application.

Services

Possibility of finding part-time employment

Working as a non-EU citizen:

In possession of a valid German residence permit for study purposes, you are allowed to work for up to 120 full days (full day = eight hours per day) or 240 half days (half day = four hours) during the calendar year. However, freelance work is not permitted. Internships that are mandatory for the successful completion of your studies at SRH Berlin do not count towards the above-named 120 full days.

Employment that is considered "student part-time work" ("studentische Nebentätigkeit", e.g. employment as a student worker at a university or in a university-related organisation or "Werkstudent" activities at companies that are related to your studies) can be done without any time restrictions.

Accommodation

We do not own any student dormitories or hostels. However, we provide assistance in selecting accommodation prior to and after your arrival in Berlin.

Career advisory service

Our Career Service supports students and alumni in planning their careers and sharpening their professional profile. Our service portfolio includes:

- Consultation services for students
- Career trainings and workshops
- Annual "Career Day" with job fair and workshops
- Support in finding a job or an internship for graduates and students

Support for international students and doctoral candidates

- Welcome event
- Buddy programme
- Specialist counselling
- Support with registration procedures



©SRH Berlin University of Applied Sciences

Sebastian Denz
Professor

Our Photography programme uses new perspectives of visual thinking to question and expand existing patterns.



Campus Tour - Berlin School of Design and Communication

Our staff gives you a little tour of our most important and used facilities on our campus of the Berlin School of Design and Communication. Our Academic Director Prof Bettina Borchardt also gives you a little insight into our CORE Learning Principle and mentions a few of our study programmes.

» more:
<https://www.youtube.com/watch?v=QSWgkVvwr3g>

SRH Universities



Our campuses in Berlin, Hamburg and Dresden

© SRH Berlin University of Applied Sciences

SRH Berlin University of Applied Sciences is a state-accredited university that offers Bachelor's, Master's and MBA programmes in English and German.

Our six schools in Berlin, Dresden and Hamburg combine modern management and entrepreneurship, hospitality, media and creative industries, technology and IT, music and sound design in modern study programmes.

All schools focus on hands-on project work in small teams, an individual learning experience, and personal supervision by lecturers with

real business experience.

With its more than 2,000 students from 100+ countries, SRH Berlin University of Applied Sciences is one of the most international universities. In addition to an international atmosphere, our students enjoy the opportunity to get in touch with industry partners and create a professional network through internships and company projects. We offer a wide range of services to support you in finding an internship, organising a semester abroad, and taking care of important tasks during your studies. With this support and environment, our students are prepared for careers in different industries around the globe.

The university belongs to the SRH Holding, a non-profit organisation with its headquarters in Heidelberg. As a leading provider of educational services, SRH operates universities, schools, and professional training centres. SRH Berlin is one of seven universities within the group with more than 14,000 students.



University location

With its population of 3.7 million residents, **Berlin** is the German capital, the largest city in Germany and the second most populous city in Europe. Apart from being a hub for higher education and research, the city is very multicultural: people from 190 nations live here, 20% of its residents come from abroad and every one in three Berliners is a first-generation or second-generation immigrant. Students in Berlin benefit from a high quality of life and a huge range of recreational activities: festivals, museums and sports events are seen everywhere. Additionally, a third of the city area is composed of parks, rivers and lakes. Berlin is a centre for politics, media and science, and it is renowned for its culture and arts scene as well as its buzzing nightlife. It is rich in history and historical monuments and has a well-connected public transport system that students can use with their discounted public transport tickets. Well-known for its innovation capacity, the German capital has a vibrant start-up scene and is known as a start-up hotspot in Europe. In addition, Berlin's low living costs and moderate rental prices, compared to other capital or European cities, make the city very attractive for both international and domestic students.

Dresden is a perfect study location. Not only is the city of art and culture a popular tourist destination with its many famous sights, but it has also developed into one of Germany's strongest and most dynamic economic locations over the past few years. As living costs and rental prices are still relatively low, Dresden is a favourable city for students from around the world. If you add the vast array of cultural events, the diverse nightlife and the city's beautiful location in the Elbe valley, one might not be surprised that Dresden is a great place to live and study in.

Hamburg is a city that is green, lively and economically strong. Located close to rivers and the ocean, Hamburg has more bridges than Venice and is part of the second largest metropolitan region in Germany. Compared to other cities in Germany, Hamburg has moderate living costs, a high standard of living and a secure infrastructure for students. The city's continuous growth makes it one of the most important and largest trade, economic and logistics centres in north-western Europe. International companies and agencies from the aviation, life science, health care, renewable energy and creative industries are based in Hamburg. Young professionals and university graduates benefit from attractive career opportunities in a growing economy and within the IT, media, retail, logistics and renewable energies industries.

Contact

SRH Universities

Study Advisor

Prinzenstraße 84.1
10969 Berlin

Tel. +49 30515650200

✉ studyinberlin@srh.de

🌐 Course website: https://www.srh-berlin.de/en/lp/ma-photography/?utm_source=wkz-BE3001CU05&utm_medium=portal&utm_campaign=daad-intpr&utm_content=en-ma-photo-vz-be&utm_term=en

📘 <https://www.facebook.com/srhberlin>

🌐 <https://www.linkedin.com/school/srh-berlin-university-of-applied-sciences/>

📷 https://www.instagram.com/srhberlin_creatives/

📺 https://www.youtube.com/@srh_berlin

Last update 27.07.2024 14:46:29

International Programmes in Germany - Database

www.daad.de/international-programmes
www.daad.de/sommerkurse

Editor

DAAD - Deutscher Akademischer Austauschdienst e.V.
German Academic Exchange Service
Section K23 – Information on Studying in Germany
Kennedyallee 50
D-53175 Bonn
www.daad.de

GATE-Germany

Consortium for International Higher Education Marketing
www.gate-germany.de

Disclaimer

The data used for this database was collected and analysed in good faith and with due diligence. The DAAD and the Content5 AG accept no liability for the correctness of the data contained in the "International Programmes in Germany" and "Language and Short Courses in Germany".

The publication is funded by the German Federal Ministry of Education and Research and by contributions of the participating German institutions of higher education.



Federal Ministry
of Education
and Research