



Deutscher Akademischer Austauschdienst
German Academic Exchange Service



Table of Contents

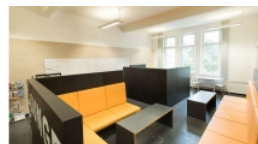
Master's degree	2
Environmental Engineering • Leibniz University Hannover • Hannover	2

Master's degree



Environmental Engineering

Leibniz University Hannover • Hannover



Overview

Degree	Master of Science, double degree (optional)
Course location	Hannover
In cooperation with	Tsinghua University in China (double degree option)
Teaching language	<ul style="list-style-type: none">English
Languages	The Resources and Environment specialisation can be studied entirely in English. All compulsory courses are held in English. Elective courses are held in English and German.
Full-time / part-time	<ul style="list-style-type: none">full-timepart-time (study alongside work)
Programme duration	4 semesters
Beginning	Winter and summer semester
Application deadline	<p>Application from non-EU countries (VPD from uni-assist is required)</p> <ul style="list-style-type: none">15 April to 31 May of the year for the winter semester15 October to 30 November of the previous year for the summer semester <p>Application from students from Germany and the EU</p> <ul style="list-style-type: none">1 June to 15 July of the year for the winter semester1 December to 15 January of the year for the summer semester <p>Prospective students applying from outside the EU must request a Preliminary Examination Documentation (VPD) from uni-assist before applying to the Master's programme. The processing time for the VPD takes up to eight weeks. Therefore, please allow enough time before applying for the programme. More information about applying for the VPD can be found on the central application pages.</p> <p>Students pursuing the double degree option can only start the programme in the winter semester.</p>

Tuition fees per semester in EUR	None
Combined Master's degree / PhD programme	No
Joint degree / double degree programme	Yes

Description/content Whether natural disasters and climate change, raw material shortages, or disturbed ecosystems – the challenges of protecting the environment and our resources are global in scale. The Resources and Environment specialisation of the Master's degree programme in [Environmental Engineering](#) focuses on forward-looking environmental scientific and technical solutions as well as the sustainable use of finite resources in an international context. The specialisation can be studied entirely in English.

The Resources and Environment specialisation offers you a unique combination of key content from the specialist disciplines of civil and environmental engineering, geodesy, mechanical engineering, and environmental and landscape planning. Your choice of specialisation, (optional) stay abroad, a practical project, and topics such as green entrepreneurship will enable you to specifically prepare for a variety of career paths in the global labour market.

Course Details

Course organisation During the first two semesters, the specialisation involves taking compulsory and elective modules that enable you to expand your specialist knowledge of engineering, mathematics, and science. In the third semester, you will choose a research-oriented (interdisciplinary) project or a practical project outside of the university to suit your strengths and future career plans. You will also have the option of studying abroad in the third semester. The fourth semester is mainly set aside for the completion of a Master's thesis.

Besides gaining professional expertise, you will also learn the methods needed to solve engineering assignments effectively and in interdisciplinary contexts and to analyse the results. During the programme, you will also develop the skills required to engage in interdisciplinary cooperation agreements in an international environment.

An attractive option for students of this Master's programme is to pursue the [double degree programme](#) with the renowned Tsinghua University in China. By completing a second Master's degree, you will acquire additional specialist qualifications while gaining insight into the world of academia and work in China, establishing contacts, and developing your intercultural skills in the process.

A Diploma supplement will be issued	Yes
-------------------------------------	-----

International elements	<ul style="list-style-type: none"> Projects with partners in Germany and abroad
------------------------	--

Integrated internships	An internship is possible but not obligatory, except in the case of the double degree option.
------------------------	---

Course-specific, integrated German language courses	No
---	----

Course-specific, integrated	No
-----------------------------	----

Costs / Funding

Tuition fees per semester in EUR	None
Semester contribution	<p>Approx. 400 EUR semester fee ("Semesterbeitrag") The semester fee includes the following:</p> <ul style="list-style-type: none"> • Contribution to the "Studentenwerk Hannover" (student services organisation) • Contribution to the student government (Student Union, AStA) • Semester ticket • Contribution to administrative costs for the Federal State of Lower Saxony <p>http://go.lu-h.de/study-costs</p>
Costs of living	<p>Compared with other European countries, the cost of living in Germany is quite reasonable. The prices for food, accommodation, clothing, cultural events, etc. are basically in line with the EU average. You will need around 850 EUR a month to cover your living expenses. The largest expense will be your monthly rent. In Hanover, the rent amounts to between 300 and 500 EUR per month.</p> <p>Cost of studying at Leibniz University Hannover: http://go.lu-h.de/study-costs</p> <p>General information on the cost of studying in Germany: https://www.study-in.de/en/plan-your-stay/money-and-costs/cost-of-living_28220.php</p>
Funding opportunities within the university	Yes
Description of the above-mentioned funding opportunities within the university	<p>Although tuition fees no longer exist in Lower Saxony, costs are indeed incurred at university, such as the semester fee, accommodation and living costs, and costs for learning materials. Here you will find possibilities to help you finance your studies: www.uni-hannover.de/en/studium/finanzierung-foerderung</p> <p>Deutschlandstipendium: go.lu-h.de/deutschlandstipendium</p> <p>Niedersachsenstipendium: go.lu-h.de/niedersachsenstipendium</p>

Requirements / Registration

Academic admission requirements	<p>The admission requirements are a Bachelor's degree in an engineering subject, such as Civil Engineering, Mechanical Engineering or Process Engineering, with a high proportion of the following:</p> <ul style="list-style-type: none"> • 12 CP Mathematics for Engineers • 18 CP Natural Sciences for Engineers (Mechanics / Fluid Mechanics / Thermodynamics) • 12 CP Computer Science / Programming • 12 CP Probability Theory / Statistics / Data Analysis • 30 CP Subject-specific Basics of Environmental Engineering Sciences (water engineering / process engineering / transportation engineering / sustainability engineering)
--	--

The exact admission requirements can be found in the admission regulations under http://go.lu-h.de/reserv_requirements.

Language requirements	Applicants from outside of the EU must provide proof of English at a C1 level. Basic German language knowledge is recommended.
Application deadline	Application from non-EU countries (VPD from uni-assist is required) <ul style="list-style-type: none">• 15 April to 31 May of the year for the winter semester• 15 October to 30 November of the previous year for the summer semester Application from students from Germany and the EU <ul style="list-style-type: none">• 1 June to 15 July of the year for the winter semester• 1 December to 15 January of the year for the summer semester <p>Prospective students applying from outside the EU must request a Preliminary Examination Documentation (VPD) from uni-assist before applying to the Master's programme. The processing time for the VPD takes up to eight weeks. Therefore, please allow enough time before applying for the programme. More information about applying for the VPD can be found on the central application pages.</p> <p>Students pursuing the double degree option can only start the programme in the winter semester.</p>
Submit application to	Non-EU applicants: <ul style="list-style-type: none">• Apply for VPD via https://my.uni-assist.de (takes up to eight weeks)• Online application at LUH: http://go.lu-h.de/masterapplication-non-eu EU applicants apply via http://go.lu-h.de/masterapplication-eu .

Services

Possibility of finding part-time employment	<p>There are many job opportunities for students on campus (in the different departments, the central administration, etc.) and off campus. About two-thirds of our students work at part-time jobs while pursuing their studies.</p> <p>Internal job postings: https://www.uni-hannover.de/en/universitaet/stellenangebote-arbeit-an-der-uni/jobboerse</p> <p>Student jobs outside of the university: jobbico Uni Hannover</p>
Accommodation	Links on housing in Hanover (including a video about housing in Hanover for international students)
Support for international students and doctoral candidates	<ul style="list-style-type: none">• Welcome event• Specialist counselling

Leibniz University Hannover



Faculty of Civil Engineering and Geodetic Science at Leibniz University Hannover

© FBG/C. Bierwagen

Leibniz University Hannover: Shaping the future with knowledge

As one of the nine leading institutes of technology in Germany, Leibniz University Hannover is aware of its responsibility in seeking sustainable, peaceful, and responsible solutions to the key issues of tomorrow. Our expertise for this stems from the broad spectrum of subjects, ranging from engineering and natural sciences to architecture and environmental planning, and from law and economics to social sciences and humanities.

The main building of the university is the Royal Welfenschloss (Palace of the Guelphs) at Welfengarten Park. In 1879, the Higher Vocational School, originally founded in 1831, moved into the palace. Later, it became the Königliche Technische Hochschule (Royal College of Technology). Only 64 pupils attended the vocational school at first, **but now there are almost 30,000 students enrolled in the nine faculties of Leibniz University Hannover and some 3,100 researchers are working in more than 180 institutes.**

Our key research areas

Leibniz University Hannover is among the world's leading institutions in its **key research areas: biomedical research and engineering, quantum optics and gravitational physics, production engineering, and interdisciplinary studies of science and academia.** These give us our innovative strength in developing precision measurement methods, optical technologies, novel materials, intelligent implants, and innovations in information technology or in the field of Industry 4.0.

The broad range of subjects at Leibniz University Hannover is entirely compatible with the overall university strategy of raising its profile, in particular in teaching and research, including the establishment and enhancement of research priority areas originating in the humanities and social sciences. Cooperation agreements with national and international partners strengthen our scientific expertise – our most important partner is Hannover Medical School.

By adopting the name of the polymath **Gottfried Wilhelm Leibniz** in 2006, the university committed itself to unity in diversity.



📍 University location

Leibniz University Hannover is very influential in shaping the image of the state capital of Lower Saxony. Not only structures like the “Welfenschloss”, the university's main building, but especially people contribute to this: approximately 30,000 students are currently enrolled. They have chosen one of the largest universities in Germany that is known for its international excellence in teaching and research. With nine faculties and a comprehensive range of study programmes, Leibniz University Hannover virtually covers the entire

academic spectrum.

Find us [here](#) on Google Maps.

Contact

Leibniz University Hannover

Faculty of Civil Engineering and Geodetic Science
Studiendekanat Bauingenieurwesen

Callinstraße 34
30167 Hannover

Tel. +49 51176219190

✉ studiendekanat-bau@fbg.uni-hannover.de

🌐 Course website: <https://www.uni-hannover.de/en/studium/studienangebot/info/studiengang/detail/environmental-engineering-track-resources-and-environment/>

📘 <https://www.facebook.com/FakultaetBauUndGeoUniHannover>

Last update 08.01.2025 21:54:06

International Programmes in Germany - Database

www.daad.de/international-programmes
www.daad.de/sommerkurse

Editor

DAAD - Deutscher Akademischer Austauschdienst e.V.
German Academic Exchange Service
Section K23 – Information on Studying in Germany
Kennedyallee 50
D-53175 Bonn
www.daad.de

GATE-Germany

Consortium for International Higher Education Marketing
www.gate-germany.de

Disclaimer

The data used for this database was collected and analysed in good faith and with due diligence. The DAAD and the Content5 AG accept no liability for the correctness of the data contained in the "International Programmes in Germany" and "Language and Short Courses in Germany".

The publication is funded by the German Federal Ministry of Education and Research and by contributions of the participating German institutions of higher education.



Federal Ministry
of Education
and Research