



Deutscher Akademischer Austauschdienst
German Academic Exchange Service



Table of Contents

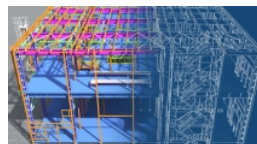
Master's degree	2
Resilient Civil Engineering (RCE) • RWTH Aachen University • Aachen.....	2

Master's degree



Resilient Civil Engineering (RCE)

RWTH Aachen University • Aachen



Overview

Degree	Master of Science (RWTH Aachen University)
Teaching language	<ul style="list-style-type: none">English
Languages	Courses are taught entirely in English.
Full-time / part-time	<ul style="list-style-type: none">full-time
Programme duration	4 semesters
Beginning	Winter semester
Application deadline	<p>Non-EU applicants (applicants who have citizenship of a country outside EU/EEA): 2 December to 1 March</p> <p>EU applicants (applicants who have citizenship of an EU/EEA country, are currently enrolled at RWTH Aachen, or hold a German university degree): 2 December to 15 July</p> <p>Apply by 15 January (non-EU) / 15 April (EU) to benefit from a 10% early bird discount on the tuition fees!</p>
Tuition fees per semester in EUR	6,000 EUR
Additional information on tuition fees	24,000 EUR in total for four semesters
Combined Master's degree / PhD programme	No
Joint degree / double degree programme	No
Description/content	Experience a unique fusion of civil engineering and architecture and become an expert in resilient infrastructures, sustainability in construction and digital planning!

The highly practice-oriented MSc Resilient Civil Engineering (RCE) explicitly takes up the concept of resilience and sustainability for infrastructures and complex building systems and integrates this basic idea holistically into design, construction and planning. The combination of study topics from the fields of civil engineering and architecture along with lectures in structural mechanics enables you to formulate comprehensive concepts for a building or infrastructure project ensuring its resilience and improving functionality. The exclusive fusion of key disciplines provides the qualification and specialisation needed to exercise interdisciplinary approaches, methods and procedures in structural engineering and thus addressing the challenges of today's and tomorrow's built environment.

As an MSc RCE student, you will learn to:

- design, plan and construct resilient and sustainable infrastructures and complex building structures
- understand planning under the aspect of defined sustainability goals, as a cooperative process
- use building information management (BIM), simulation, automation and cost calculation for a construction project
- develop solutions for building sustainability performance optimisation using cutting-edge technologies
- implement structural control and health monitoring systems for important civil engineering structures

Course Details

Course organisation	<p>The MSc RCE consists of:</p> <ul style="list-style-type: none"> • compulsory courses • elective projects • language courses • the Master's thesis, which can be written internally with an institute or externally with a company <p>Get a detailed overview of the programme structure on our MSc RCE website.</p>
A Diploma supplement will be issued	Yes
International elements	<ul style="list-style-type: none"> • Language training provided • Projects with partners in Germany and abroad • Integrated/optional study abroad unit(s) • Opportunities for students to work abroad • Specialist literature in other languages
Integrated/optional study abroad unit(s)	The programme takes place in Aachen (Germany). The Master's thesis can be completed in other countries.
Course-specific, integrated German language courses	No
Course-specific, integrated English language courses	No

Costs / Funding

Tuition fees per semester in EUR	6,000 EUR
Additional information on tuition fees	24,000 EUR in total for four semesters
Semester contribution	The RWTH Aachen University's semester fee of approx. 300 EUR is a student body and social contribution fee that every student must pay each semester in order to stay enrolled as an active student. It includes, among other benefits, a "semester ticket" covering public transport in the federal state of North Rhine-Westphalia in Germany as well as the region of South Limburg in the Netherlands.
Costs of living	The average cost of living and studying, including food, accommodation, personal and social expenses, and study-related costs, amounts to 900 to 1,000 EUR per month.
Funding opportunities within the university	Yes
Description of the above-mentioned funding opportunities within the university	<p>Women in Engineering Scholarship: This scholarship was created to support qualified female engineering students. The scholarship grants a reduction of up to 25% of the tuition fees.</p> <p>High Potential Student Grant: This scholarship was created to support highly qualified students. The scholarship grants a reduction of up to 25% of the tuition fees.</p> <p>Global Talent Scholarship: This scholarship was created to support promising students from Egypt/Indonesia/Iran/Nigeria/Turkey. The scholarship grants a reduction of 35% of the tuition fees.</p> <p>Outstanding Performance Award: This scholarship honours students who have successfully completed our German Engineering College. Their remarkable performance will be rewarded with a reduction of up to 50% of the tuition fees.</p>

Requirements / Registration

Academic admission requirements	<ul style="list-style-type: none">• Bachelor of Engineering in civil engineering or Bachelor of Science in civil engineering• Relevant work experience of six months by the time of application• Fundamental knowledge in engineering and civil engineering <p>Please see our website for detailed information on the admission requirements for the MSc RCE.</p>
Language requirements	<p>If you would like to attend an English-taught Master's degree programme, you must be fluent in English (oral and written) in order to understand lectures, textbooks and manuals and to participate in lab projects, industrial internships and examinations.</p> <p>One of the following certificates must be submitted at the time of enrolment (not at the time of application):</p> <ul style="list-style-type: none">• TOEFL Internet-based: minimum of 90 points• IELTS test: minimum overall band 6.0 points• Cambridge Test – Certificate in Advanced English (CAE)• First Certificate in English (FCE), completed with B• Placement test of RWTH Aachen University's Language Centre (B2 – only available for

students already enrolled at RWTH Aachen University)

All applicants who have a school leaving qualification or first degree in English that was issued by an institution in the United Kingdom, Ireland, Australia, New Zealand, Canada, or the US are exempt from the English language certificate requirement. Please note that having German citizenship or citizenship of an English-speaking country, even those listed above, does not in and of itself exempt you from the respective language certificate requirement.

No German language skills are required for admission and enrolment. However, you will have the chance to take German language courses as part of your curriculum at RWTH Aachen University Language Centre.

Application deadline

Non-EU applicants (applicants who have citizenship of a country outside EU/EEA):
2 December to 1 March

EU applicants (applicants who have citizenship of an EU/EEA country, are currently enrolled at RWTH Aachen, or hold a German university degree):
2 December to 15 July

Apply by 15 January (non-EU) / 15 April (EU) to benefit from a 10% early bird discount on the tuition fees!

Submit application to

Please use [the official online application portal of RWTH Aachen University](#) and submit your electronic application.

Services

Possibility of finding part-time employment

Students enrolled at RWTH Aachen University have the opportunity to find a job on campus and work for up to 19 hours per week. This also allows students to become more familiar with the university institutes and take part in projects related to their field of study. The maximum work limit for off-campus work is 120 full days / 240 half days per year for non-EU students.

Accommodation

Aachen is a vibrant university city with several hundred new students arriving each semester. The housing market is quite tough as a result, especially during the months of March/April and September/October. Finding suitable and affordable accommodation can be time consuming and challenging.

Therefore, we (RWTH International Academy) offer our own accommodation in two apartment buildings in the city centre to students of our Master's degree programmes. Benefit from exclusive prices and in-house services, whether you only need short-term accommodation before moving into your own apartment or whether you are looking for a new home for the duration of your studies. Visit our [housing website](#) for more information.

Career advisory service

Our Career Service is an integral part of our student success management. It is designed to empower you to proactively drive your career forward from the first day of your studies. You will have seamless access to a valuable and comprehensive career programme matching your studies. Experience extensive career services and mutually beneficial connections to employers, research facilities and institutes at RWTH Aachen University throughout the academic year. As alumni of RWTH Aachen University, we will support you in achieving your career goals and lifelong success by providing innovative further education programmes and networking events.

Benefit from:

- career programme
- advice and coaching
- professional collaborations and partnerships

- career platform

Support for international students and doctoral candidates

- Welcome event
- Specialist counselling
- Cultural and linguistic preparation
- Visa matters
- Help with finding accommodation
- Tutors
- Accompanying programme
- Support with registration procedures

General services and support for international students and doctoral candidates

We look forward to welcoming students of all nationalities! For students from [China](#), [India](#) and [Latin America](#), we provide exclusive access, special support and individual consultation through our academy offices on site.



MSc Resilient Civil Engineering

The highly practice-oriented MSc RCE takes up the concept of resilience and sustainability for infrastructures and complex building systems, and it integrates this basic idea holistically into design, construction and planning. Future students become specialised civil engineers, trained to tackle the progressive urbanisation of the 21st century in combination with extreme climate conditions.

» more:

<https://www.youtube.com/watch?v=EPjhwnd4zUs>

RWTH Aachen University



RWTH Aachen University

© RWTH International Academy

With 260 institutes, nine faculties and three Clusters of Excellence, RWTH Aachen University is one of Europe's leading institutions for science and research. Currently, more than 47,000 students are enrolled in 170 courses of study. Of these students, more than 13,000 are international students. RWTH Aachen is well-known for state-of-the-art education that tackles some of the world's most pressing global challenges. Our graduates are highly sought after by businesses and industry as trainees and for executive positions.

As the official academy for education of RWTH Aachen University, RWTH International Academy is tasked with promoting and developing the integration of professional and academic education. Our goal is to make knowledge accessible to international participants through application-oriented educational formats and programmes, thus making a lasting contribution to lifelong learning.

[More about RWTH International Academy](#)



University location

[The student city of Aachen](#) is a vibrant and historic place located at the border triangle of Germany, Belgium and the Netherlands. Aachen was a favoured residence of Charlemagne. After the departure of the Romans from this region, Charlemagne finally managed to forge the lion's share of Europe into something that resembled an administrative unity, with Aachen as the beating heart of the empire. The "Rathaus" (city hall) and "Dom" (cathedral) bear witness to this earliest Carolingian building history. During your time in Aachen, you will have the opportunity to discover the city, its history and its most important sights. Moreover, you will experience student life at one of Europe's leading technical universities and become part of the international student community. There is no better place to encounter European culture while challenging yourself in our programmes.

Contact

RWTH Aachen University
International Academy

Nadine Maschke

Campus-Boulevard 30
52074 Aachen

✉ Intake@academy.rwth-aachen.de

🌐 Course website: <https://bit.ly/3Mry4TN>

📘 <https://www.facebook.com/RWTHInternationalAcademy/>

🐦 https://twitter.com/RWTH_Academy

🌐 <https://www.linkedin.com/company/rwth-international-academy/>

📷 <https://www.instagram.com/rwthacademy>

📺 <https://www.youtube.com/user/RWTHAcademy>

Last update 01.12.2024 03:34:37

International Programmes in Germany - Database

www.daad.de/international-programmes
www.daad.de/sommerkurse

Editor

DAAD - Deutscher Akademischer Austauschdienst e.V.
German Academic Exchange Service
Section K23 – Information on Studying in Germany
Kennedyallee 50
D-53175 Bonn
www.daad.de

GATE-Germany

Consortium for International Higher Education Marketing
www.gate-germany.de

Disclaimer

The data used for this database was collected and analysed in good faith and with due diligence. The DAAD and the Content5 AG accept no liability for the correctness of the data contained in the "International Programmes in Germany" and "Language and Short Courses in Germany".

The publication is funded by the German Federal Ministry of Education and Research and by contributions of the participating German institutions of higher education.



Federal Ministry
of Education
and Research